

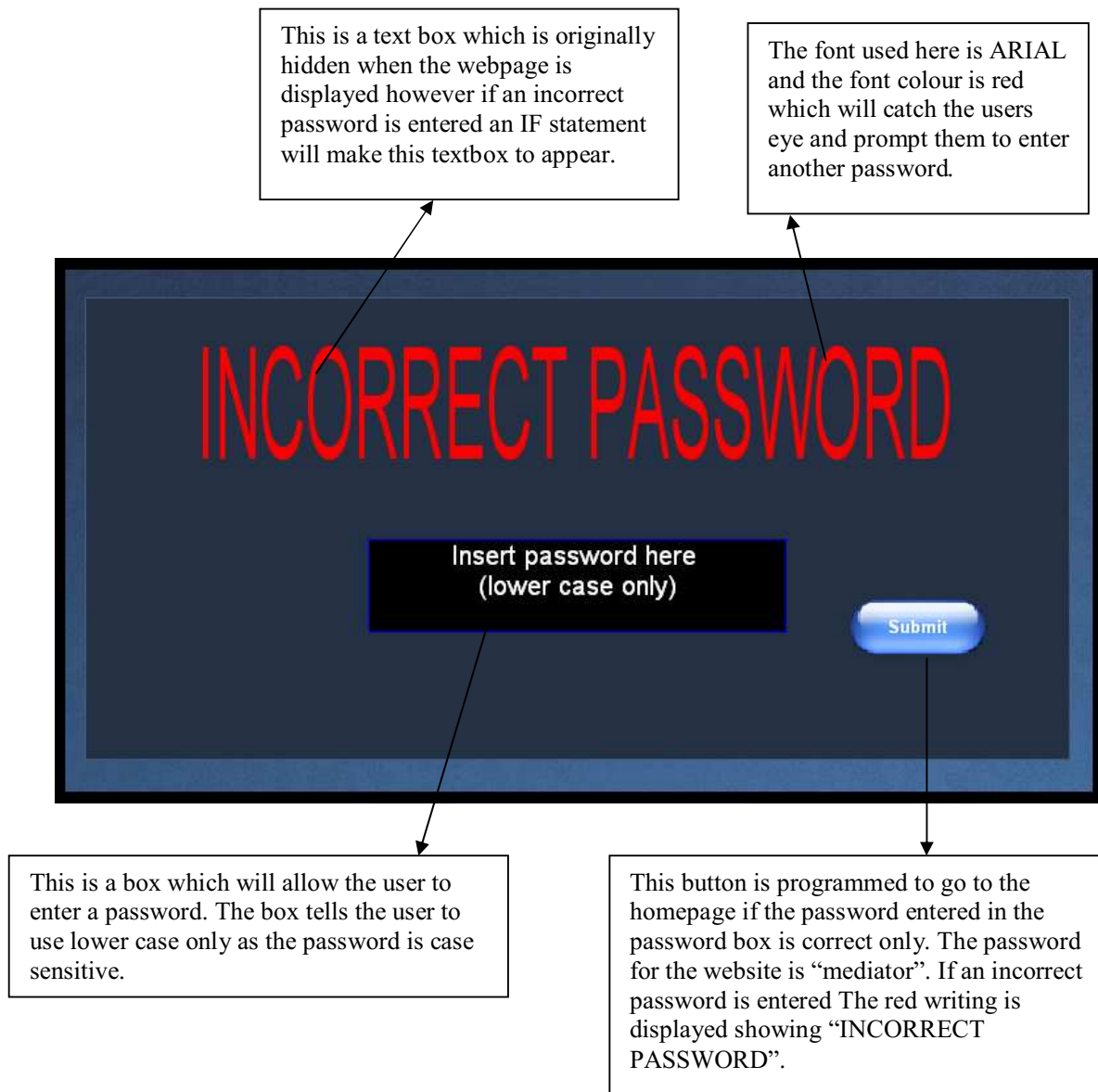
Implementation

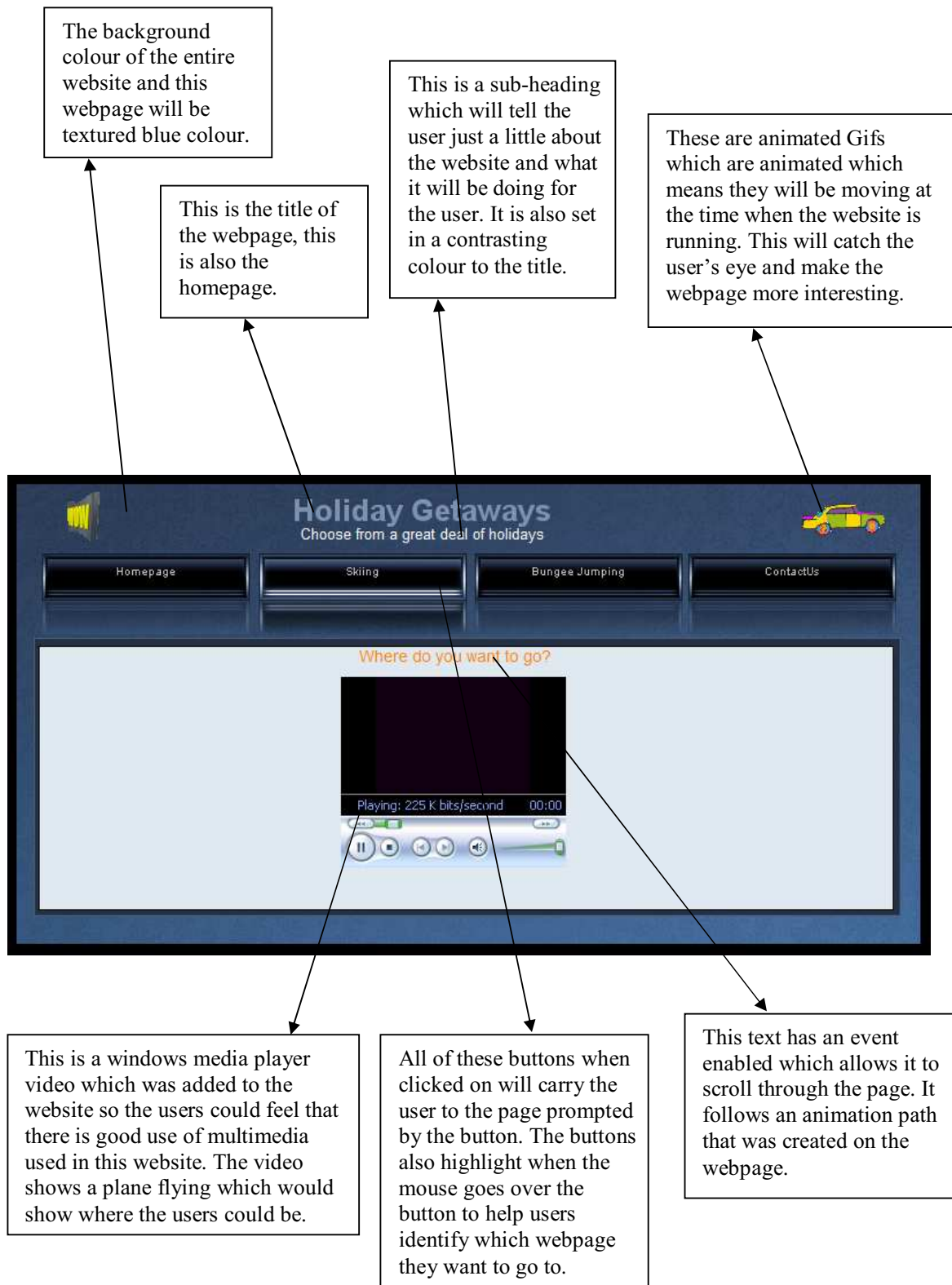
Finished design

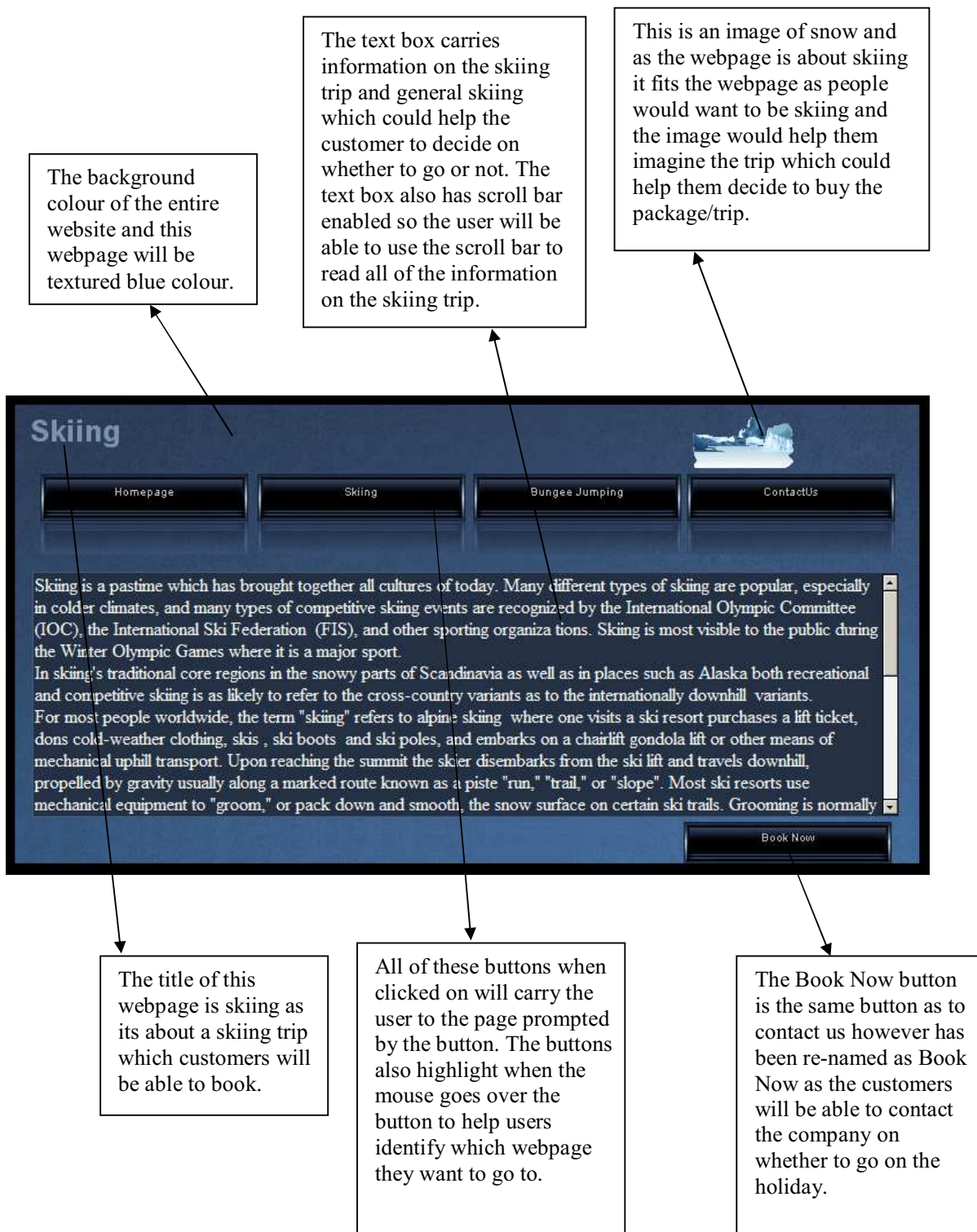
The finished design was implemented in Mediator in accordance to the sub-tasks. The homepage you can see below will allow the user to get to all the different pages which tells them about the different holidays and packages the company offers. However I did make some changes to the website and these were:

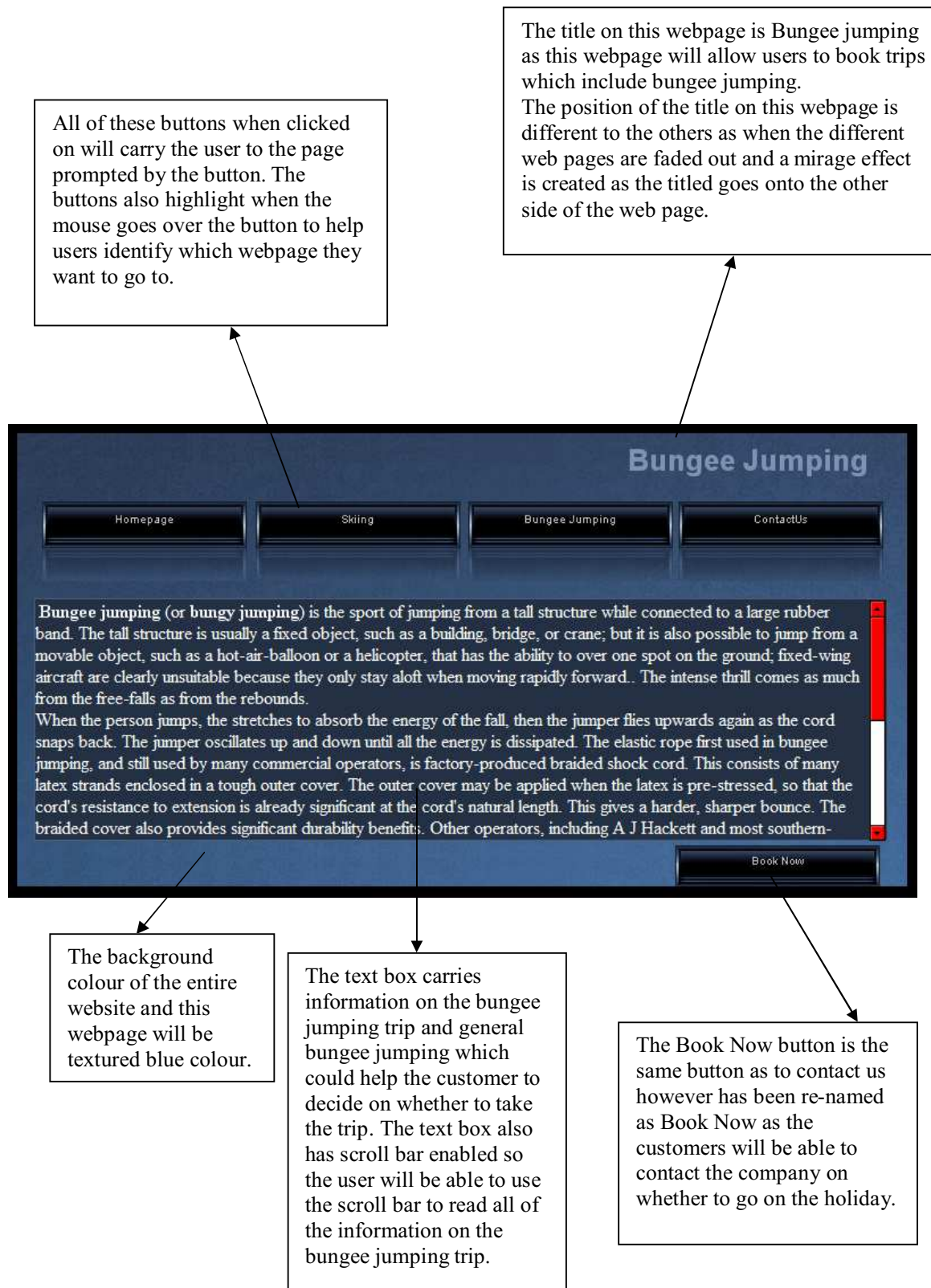
- Changed the pictures
- Used a different font
- I used a password page which I had not initially decided to use.

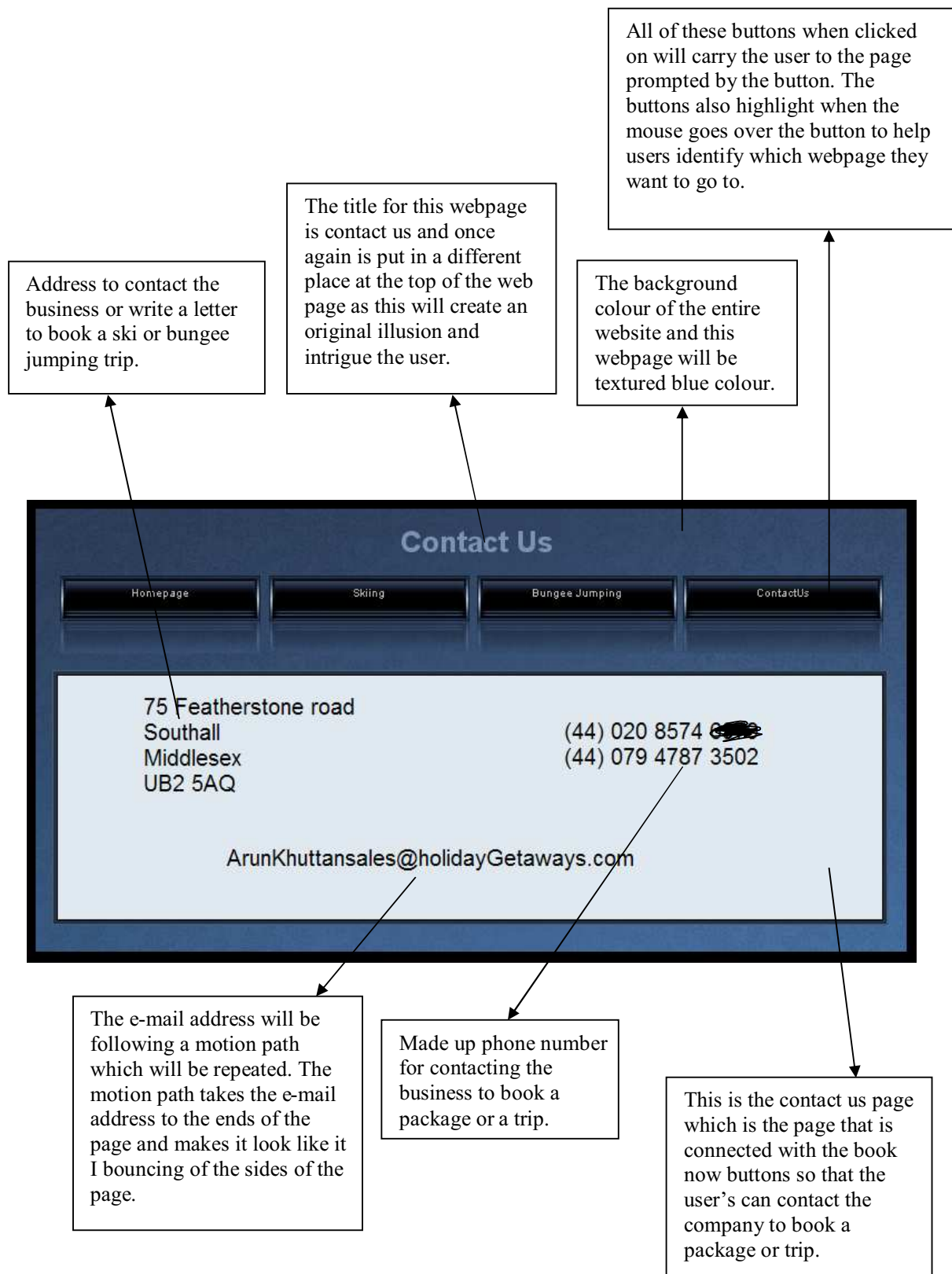
Password Page









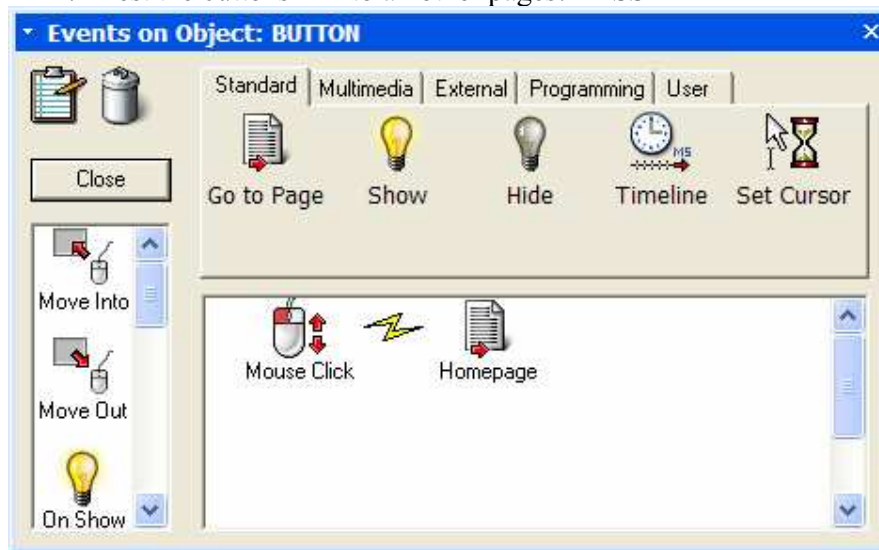


Test Check

Test No.	Purpose of Test	Expected Result	Actual Result
1	Test the Buttons that link to all other pages.	Pass	Pass
2	Test the hyperlinks on all pages.	Pass	Pass
3	Test scrolling marquee.	Pass	Pass
4	Test password page for any errors.	Pass	FAIL
5	Test all information is correct and spelt correctly.	Pass	FAIL
6	Test scrolling bars and drag functions work.	Pass	Pass
7	Check all information is up-to-date and correct.	Pass	Pass
8	Make sure music plays throughout the website.	Pass	FAIL
9	Make sure windows media player video plays correctly.	Pass	Pass
10	Make sure timing for every motion path is correct.	Pass	Pass
11	Test all animated Gif's work properly.	Pass	Pass

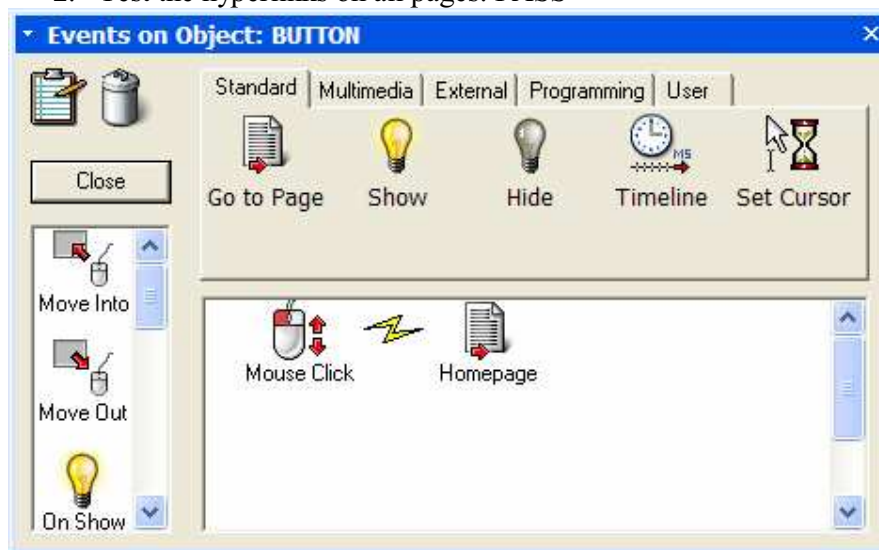
Below I will show how each test was passed or how a test was failed and then how it was fixed.

1. Test the buttons link to all other pages. PASS



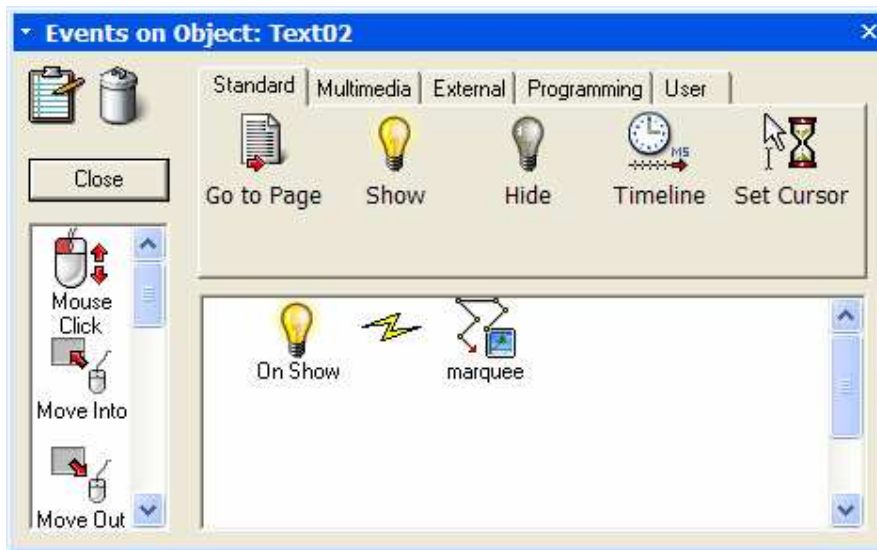
As you can see the homepage button and all other buttons go to the page they are supposed to as the link above shows as it does.

2. Test the hyperlinks on all pages. PASS



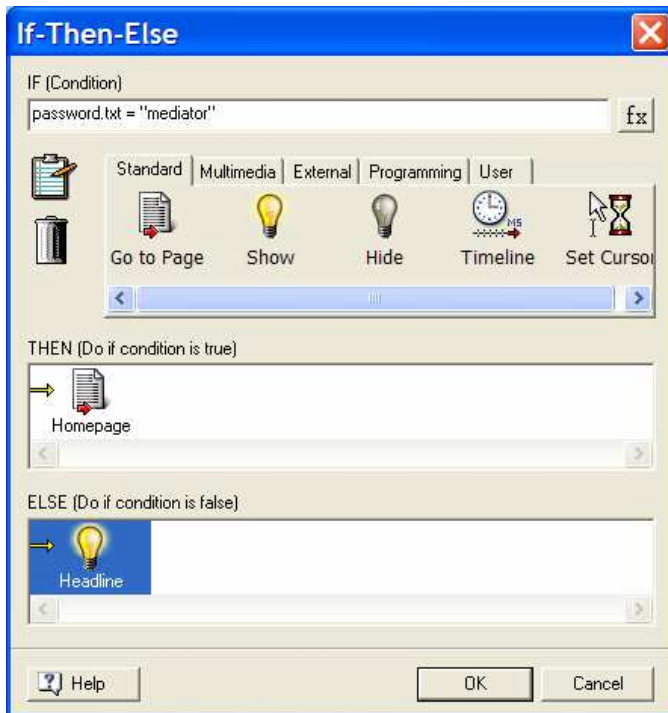
As you can see the homepage button and all other buttons go to the page they are supposed to as the link above shows as it does.

3. Test scrolling marquee. PASS



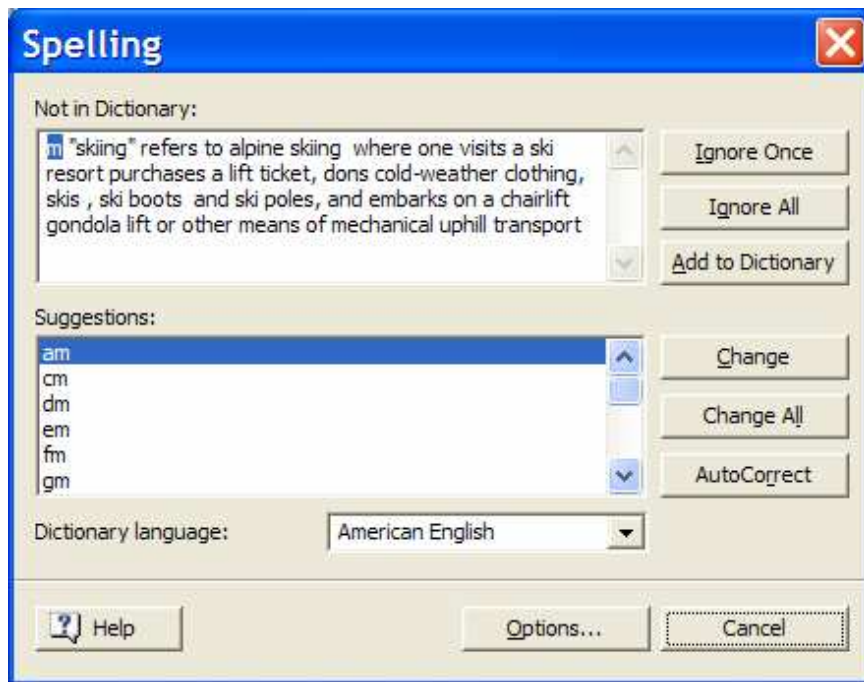
As you can see the text on show will follow the animation which is the animation path which is the scrolling marquee. It will be scrolling around the page.

4. Test password page for any errors. FAIL



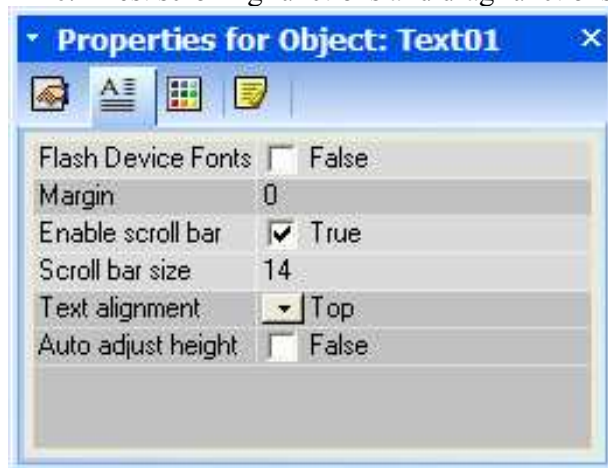
As you can see the test failed because when writing the conditions of the IF statement a spelling mistake was made which allowed the password page from working. The error has now been fixed and the password page works perfectly.

5. Test all information is correct and spelt correctly. FAIL



The spelling test failed as there were a few spelling mistakes throughout the website however now the spelling mistakes have been corrected.

6. Test scrolling functions and drag functions work. PASS



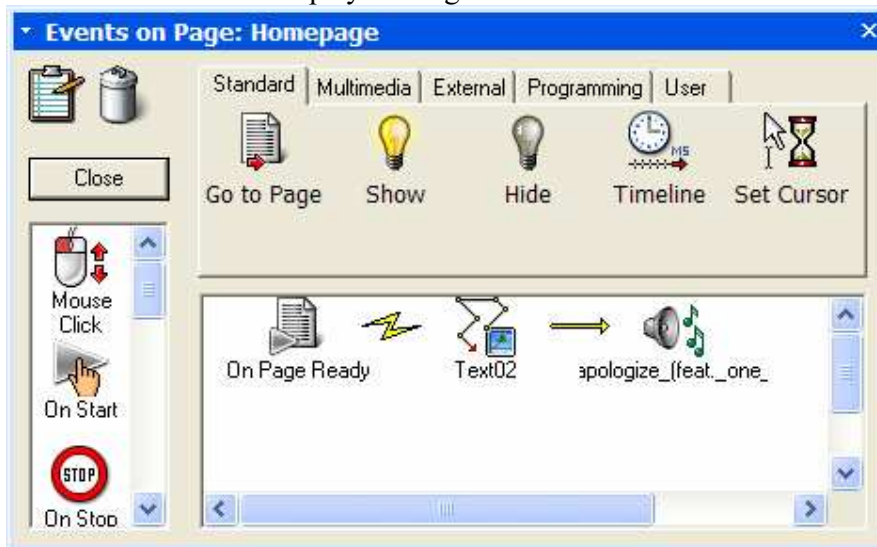
As you can see above the enable scroll bar option has been checked so the possibility of scrolling to read all the text has been enabled.

7. Check all data is up-to date and correct. PASS

All data was collected from websites that had been edited in the last week and the website will be regularly updated. The website used to collect most of the information was

collected from Wikipedia which is a reliable website to collect information from so the data is reliable, correct and up-to-date.

8. Make sure music plays throughout website. FAIL



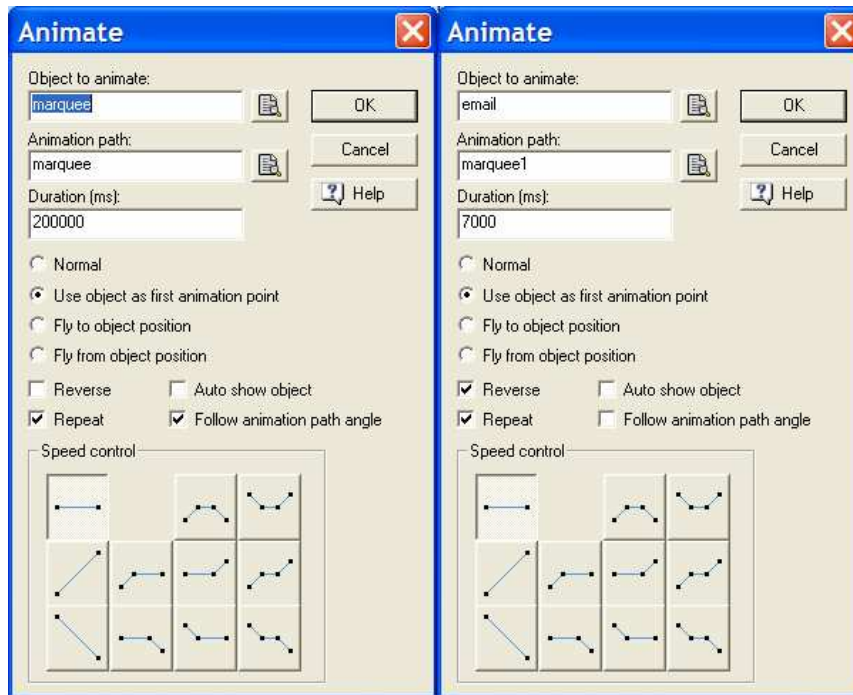
This test failed because the name of the song entered was incorrect so the music did not run however now the name of the song has been corrected and now the song plays throughout the entire website correctly.

9. Make sure windows media player video plays correctly. PASS



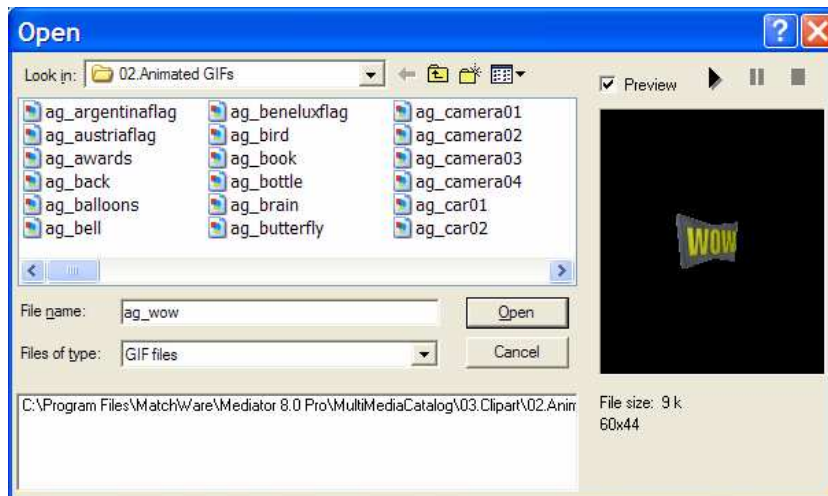
As you can see the windows media player video is playing the video perfectly without any problems.

10. Make sure timing for every motion path is correct. PASS



As you can see above the motion paths have been adjusted to meet their surroundings and fit in correctly to the webpage that they will be shown on.

11. Test all animated gifs work properly. PASS



As you can see above once again all the animated Gifs are working correctly and can be opened correctly into the website document.