

Web Pages design work

User Needs:

My web site is going to be about computer hardware. It will help users with a basic knowledge on computing to decide what they want for there existing or new computer. It will give the users the average prices for each listed computer component/device, and will explain to users how the computer components/devices work, and will explain the different advantages and disadvantages of the component/device.

This can then help users to learn new facts on computer hardware, but most importantly decide what they need and don't need, and also will help them to keep to an allocated budget by giving the average prices.

Information Requirements:

The information needed for the web site is:

1. **Input Devices** – a picture of each device, an explanation on how it works, its advantages, its disadvantages and its average price (£).
2. **Output Devices** – a picture/photo of each device, an explanation on how it works its advantages, its disadvantages and its average price.
3. **Storage Devices** – a picture or animation of each device, an explanation on how it works, its advantages & disadvantages, and lastly its average price.
4. **Main Processing Unit** – a picture or animation of each device, an explanation on what it is and what it does, and lastly its average price.

I am going to collect the graphics and animations using the internet, when I have found them they will be saved to my computer. The information on the devices will also be collected from the internet by searching for them. I will search the internet and look in catalogues to find out an average price for each device/component. The sound files will be collected from the Internet and from 'Clip Art' on my computer.

Blank Page
(Drawn Plan)

Plan of Website:

On the HOME page (at the top) there is going to be a welcome message. Then there will be the title 'Computer Hardware...' Further down the page there will be a list of 5 headings centre aligned, they will be: 'Input Devices', 'Output Devices', 'Storage Devices', 'Main Processor Unit', and finally 'Advice on buying a computer'.

Hyperlinks will link the headings to their corresponding web page. On the bottom of every page except for the last one, there is a hyper link stating 'Go to: ...' this links the current page to the next page, enabling the user to read other pages without having to go back to the homepage. On the top of every page there is a Home hyperlink control button; this will allow a user to go back to the homepage.

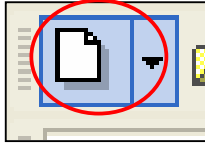
The 'Input Devices', 'Output Devices' and 'Storage devices' all have the same layout as you can see on the plan below. The three pages have 4 columns, they are for: the 'Name of Device', 'How it works', 'Advantages' and 'Disadvantages'. These will be filled in for each device in rows.

The 'Main Processing Unit' page has the homepage hyperlink at the top and the 'Go to...' hyperlink at the bottom just like the other pages. The only differences are the columns. There are three columns in this page, they are for: 'Part of Main Processing Unit', 'What is it?' and 'What does it do?' Once again these will be filled in for each part in rows.

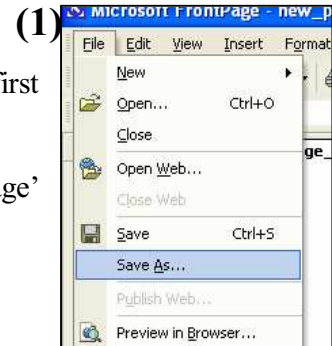
The last page 'Advice on buying a computer' only has a HOME hyperlink and not one to link it to the next page because it is the last page. There will be useful information about choosing a computer.

There will be a picture on all pages that have a description of a device or component; the picture will be of the device. (Some pictures might be animated). All pages will contain text in order to explain the heading to users.

First of all I opened up 'FrontPage'; this is the program that I am going to use to create the web pages. I opened it by clicking on the icon in the start menu as shown on the next page.



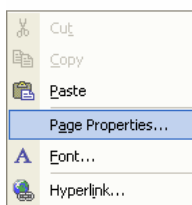
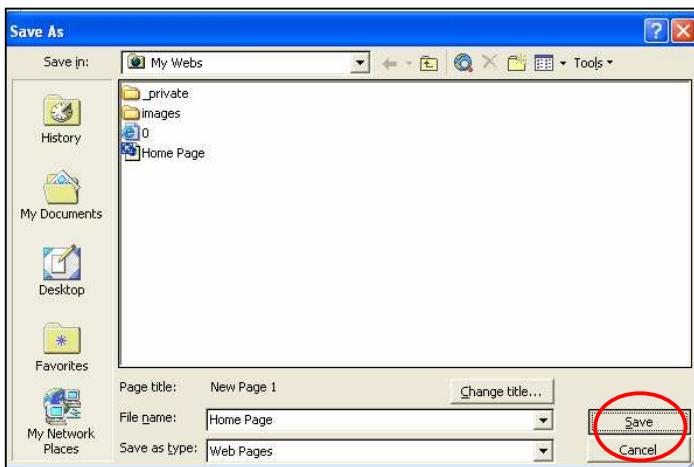
I then opened up a new page by clicking on the new page button in the toolbar.



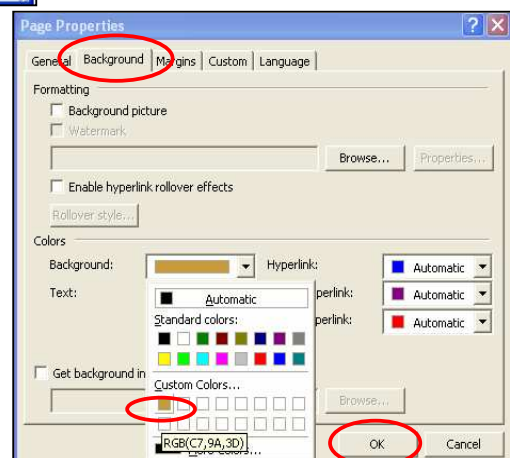
(1) The next step was to save my work in a location. To do this I first of all clicked on 'File' and then 'Save As'.

(2) I then selected the file location and saved the page as 'Home Page' and clicked on 'OK'.

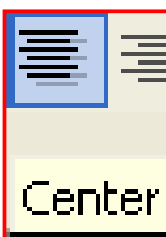
(2)



The first step was to create the home page, to do this I first of all had to select the background colour. So I right-clicked the background and clicked on page properties.

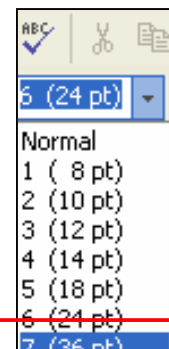


A window popped up, I selected 'Background', and changed the colour by clicking on the down pointing arrow and then clicked on 'OK'.



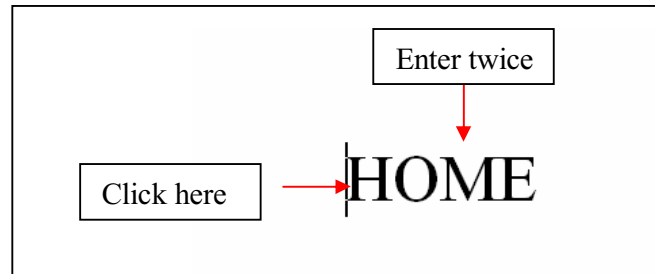
The back ground is now coloured and completed. I now have to write the title 'HOME'. To do this I clicked the centre alignment button (as shown on the left) so that the title is in the middle of the page.

I then changed the font size to 7 (36pt) by clicking on the down pointing arrow as shown to the right. Once this was



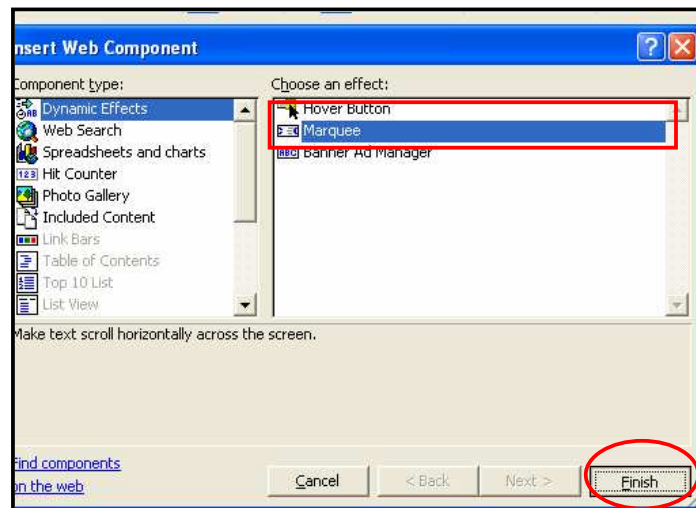
done I typed in the title 'HOME'.

I now had to write the welcome message and another title at the top called 'Computer Hardware...' First of all I had to move the title 'HOME' further down the page, to do this I put the cursor next to the beginning of the word and clicked in the page (as if you were going to type there). I then pressed enter twice, this is shown below.

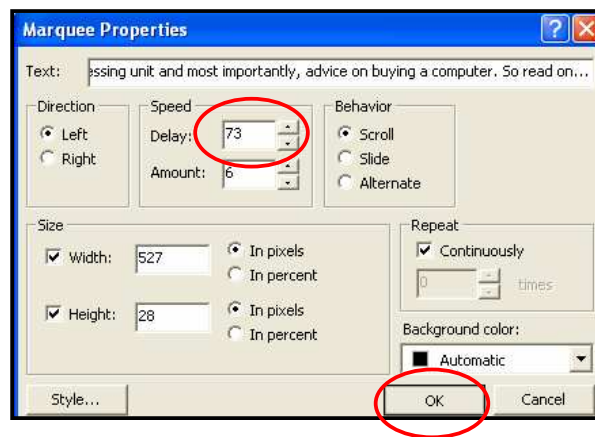


Once this was done I wrote the welcome message, but I wanted this to be a scrolling marquee, to do this I:

- (1) Click on 'Insert' on the main toolbar, I then selected 'Marquee' by clicking on it, the last thing to do was to click on 'Finish'.**

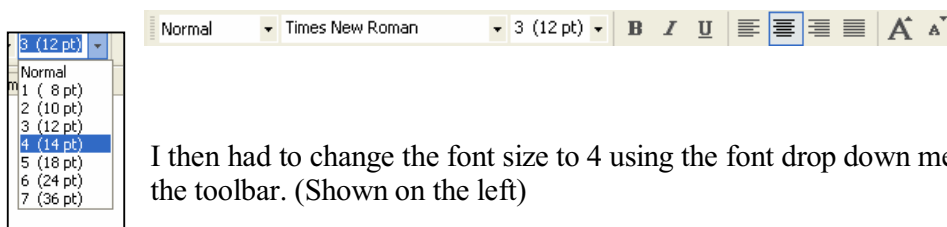
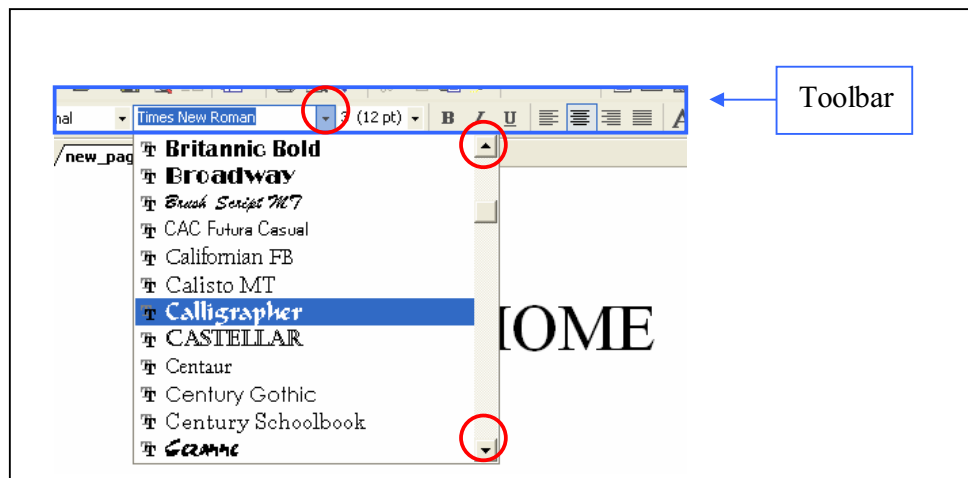


(2) A window popped up, it wanted me to type the message and to change the settings. So I typed the message and adjusted the settings so that the message would go across the screen at a suitable speed.



The scrolling marquee is now complete.

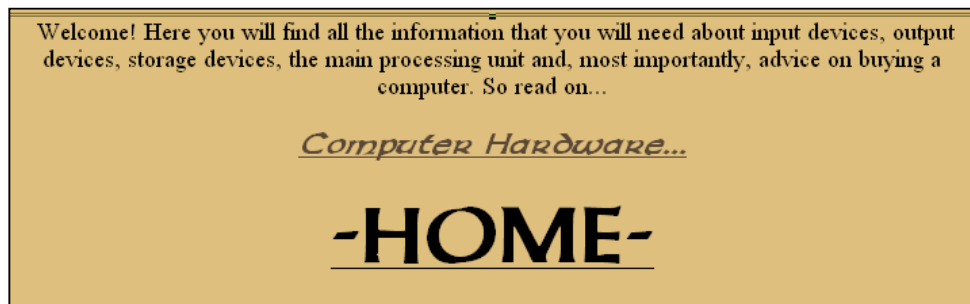
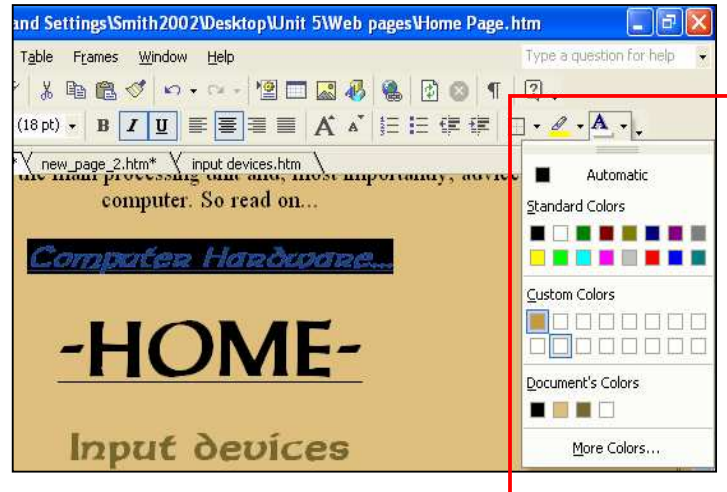
I chose the size and font of the text and also centre aligned it. To do this I pressed on the down arrow for font on the toolbar. I then searched through the list using the up and down pointing arrows. Once I found a font that I liked, I clicked on it once, and the font was now changed. As I have shown before, I used the centre align button on the toolbar so that I could write in the centre of the page. This is shown below:



I then had to change the font size to 4 using the font size drop down menu on the toolbar. (Shown on the left)

All I had to do now was type the text. When this was done I pressed the 'Enter' key twice, I now had to type the title 'Computer Hardware...' I used the same methods as shown before for changing the size, alignment and font.

I also changed the colour of the text, to do this I highlighted the text and clicked onto the down pointing arrow in the 'Font Colour' button in the formatting toolbar. I then selected the colour.

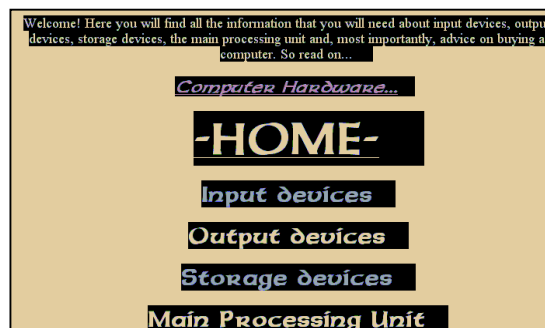


This is what I had so far, but it wasn't complete because I now had to type in the titles for each web page.

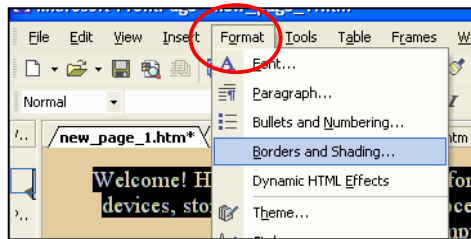
I typed the page names on separate lines (by pressing enter), and changed the font, alignment and size as shown before. The titles are: Input Devices, Output Devices, Storage Devices, Main Processing Unit and Advice on Buying a Computer.

Once I had completed the page titles I inserted a border shown in the 3 steps below on the next page.

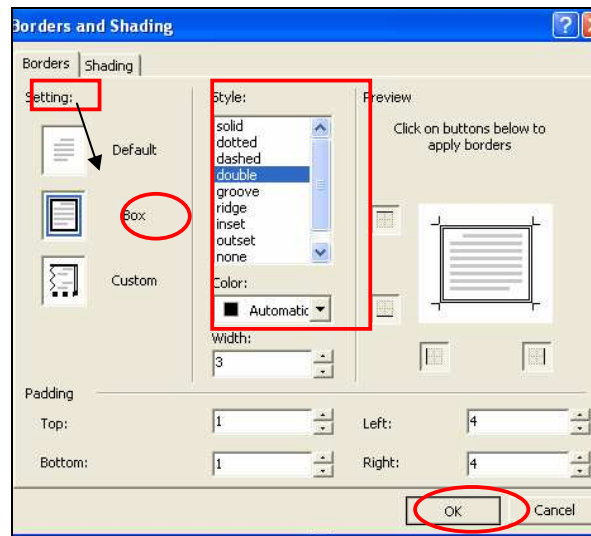
(1) Highlight all work on the page



(2) Click on 'Format' on the main toolbar and select 'Borders and Shading'



(3) On the pop up menu select 'Box' in 'Setting', select the style and colour, then click OK



The Home Page is now complete for this time. (Hyperlinks e.t.c are added on later)

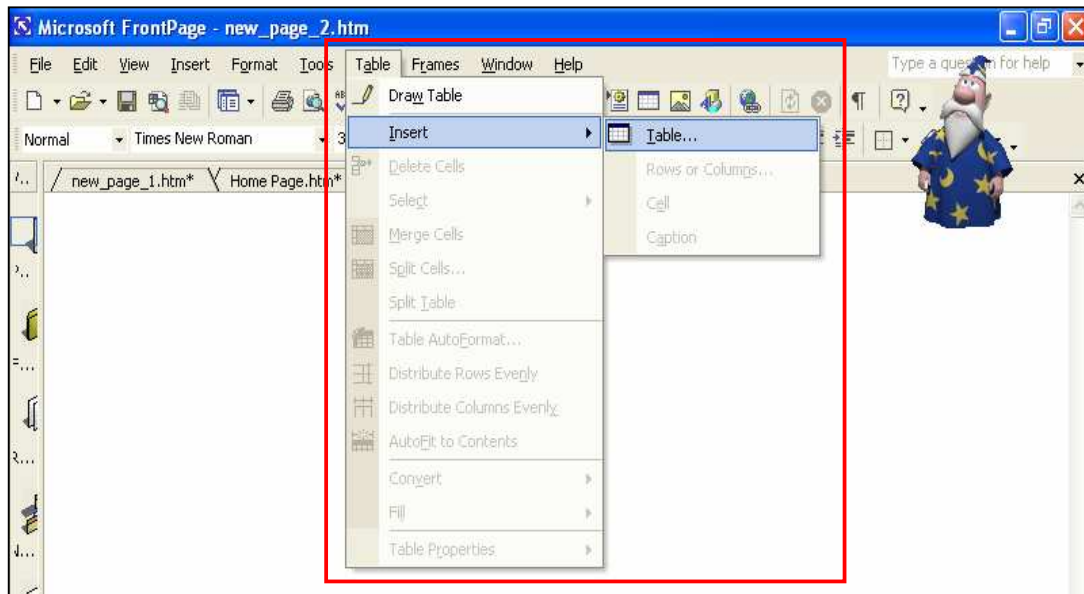
With the Home Page completed I now have to make the other corresponding pages to go with the titles on the Home Page, the first one is 'Input Devices'. So I am first of all making the page for 'Input Devices'.

Input Devices Page

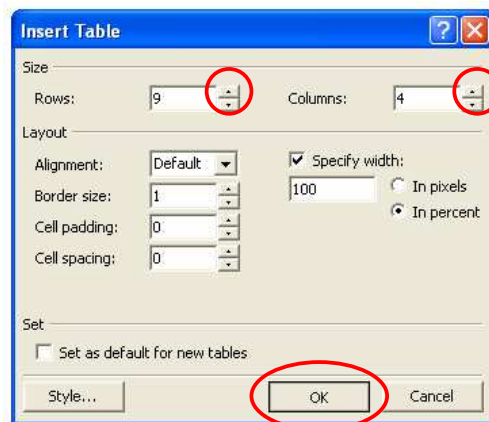
The first step was to create a new page using the 'New Page' button as shown before. I then saved it into the same location as the Home Page; the web page is saved as 'Input Devices'.

I did the basic things first as I have shown below, these were the background, and the title 'Input Devices'. The next step was to create a table to show all of the information clearly and well this is shown below in steps 1 to 4.

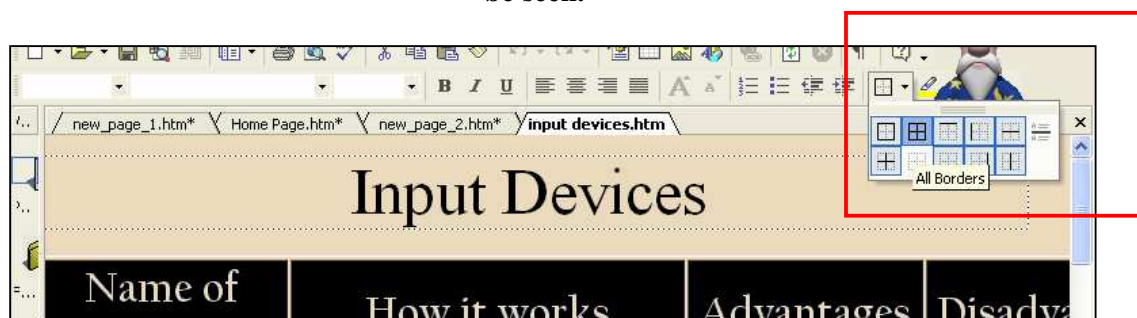
(1) Click on 'Table' in the main toolbar, click on 'Insert' and then 'Table...'



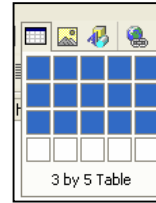
(2) Insert the number of rows and columns by clicking on the up and down pointing arrows, then click on OK.



(4) I highlighted all of the lines in the table and then clicked on the 'All Borders' button on the toolbar. I selected the border that goes around all of the lines. I have done this because at the moment the lines are just for a guide and won't be seen.



The table is now complete; an alternative method could have been to simply select the size on the 'Tables' button on the toolbar as shown on the right.

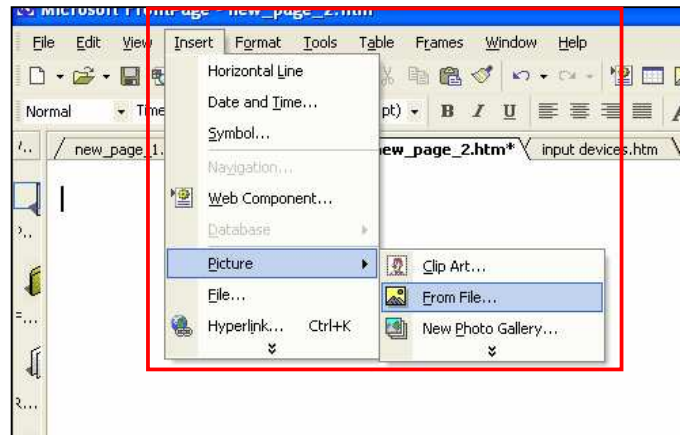


With table now completed I filled it in by typing text, I changed the alignment, size, font and colour as shown before.

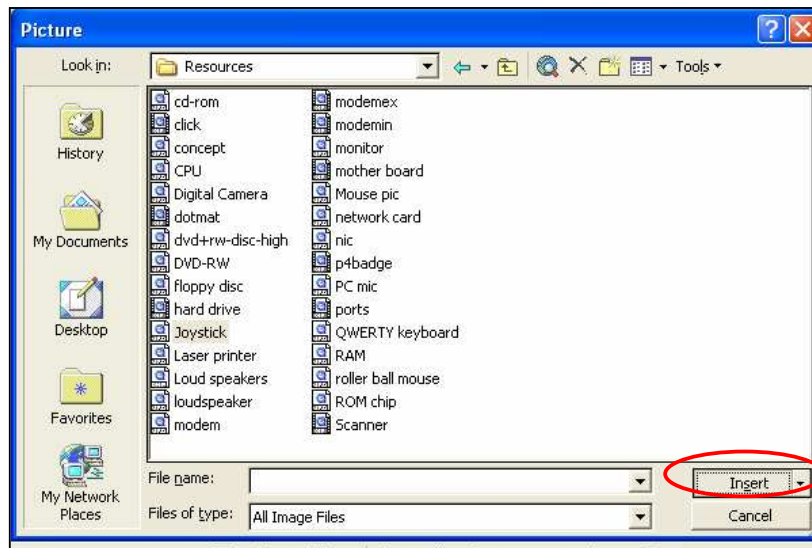
To adjust the column and row width I simply clicked on the lines and moved them up/down, left/right as shown below. This is shown on the left.

I also included pictures, shown on the next page are step-to-step instructions on how to insert pictures or animations in a webpage.

- (1) Click on the area of your page where you want the picture, then click on 'Insert'; on the main toolbar, click on 'Picture' and the 'From File'.



(2) Select your picture from its location and click on ‘Insert’.



The picture is now inserted into the webpage. To change the size of it you simply click and hold a little black square and then drag the cursor further or closer away.



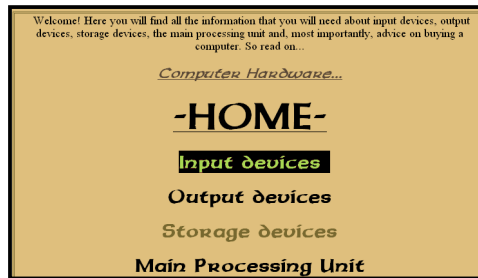
I have used the same steps for creating the Output Devices, Storage devices and Main Processing Unit web pages. The only difference with the Main Processing Unit was that there were fewer columns and different headings.

For ‘Advice on Buying a Computer’ I simply typed text onto the page without having to construct tables or anything else.

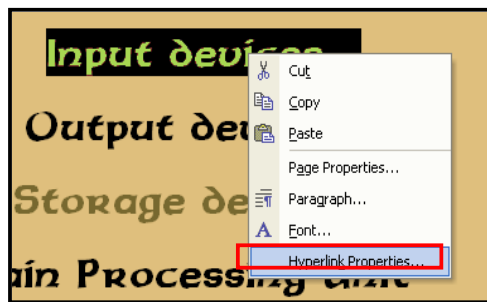
Hyperlinks

The first hyperlinks that I have made are the ones that link each webpage to the homepage. Once they are set up, a user can click on to one of the headings on the homepage, and the hyperlink will direct the user to that page. So the link is a hypertext link. The way in which I did this is shown below.

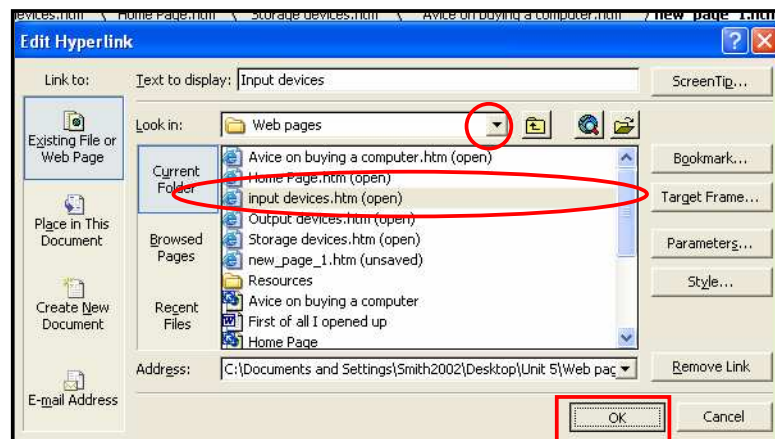
(1) Highlight the text that is going to be the hyperlink



(2) Right-click on the text and select



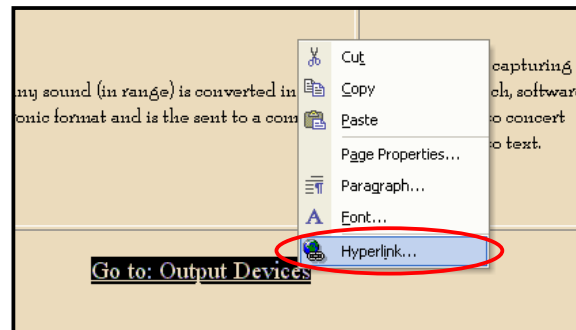
(3) Once a window pops up, find the file location of the page that you want to make a hyperlink with using the down pointing arrow, once this is click once on the page and then click OK.



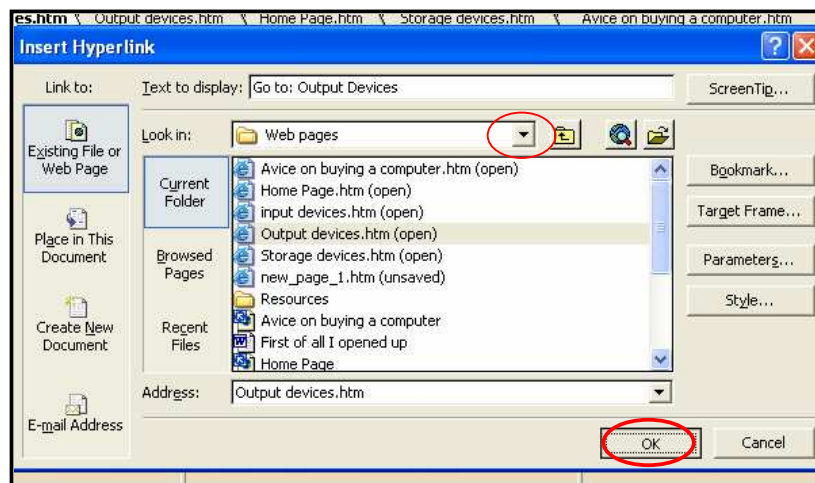
The hypertext link is now complete; I did the same thing for the other four pages.

The next hypertext links that I had to do were to link the current page being viewed by a user to the next. This is shown below.

(1) First of all I went to the first page ‘Input Devices’, at the bottom of the page I wrote ‘Go to: Output Devices’ (this is the next page). Once this was done I highlighted this text, right clicked on it and clicked on ‘Hyperlink’.



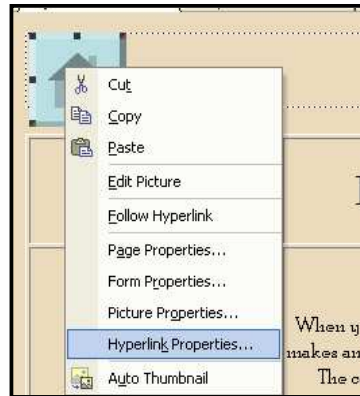
(2) Once the window popped up I looked for the location of the web page ‘Output Devices’ using the down pointing arrow, once I found it I clicked on it once and then clicked on OK.



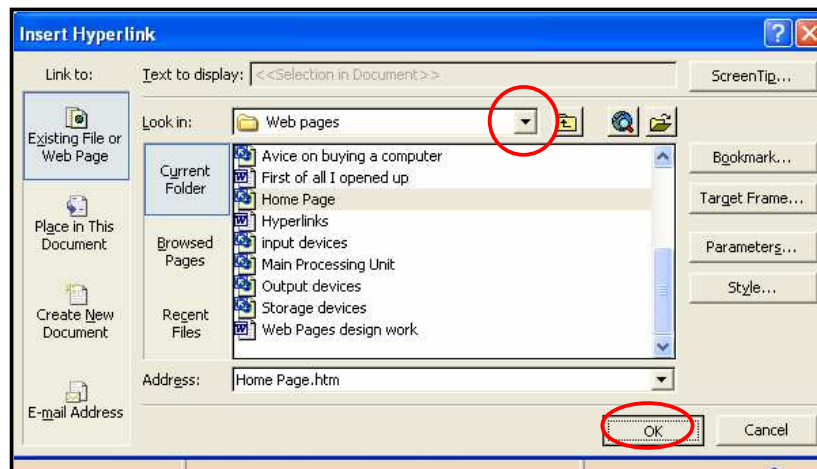
The hypertext link was now completed so I did the same with the other pages except for the last one ‘Advice on buying a computer’; this is because it is the last page, so instead I wrote ‘Home’.

The last hyperlinks that I had to make were to allow the user to go to the homepage by clicking a button. So I am making a link using an action button, this is shown below.

(1) First of all insert the picture, I have explained how to this before ‘Insert’, ‘Picture’, ‘From File’. I then right-clicked on it and clicked on ‘Hyperlink’



(2) Once the window popped up I looked for the location of the web page ‘Home’ using the down pointing arrow, once I found it I clicked on it once and then clicked on OK.

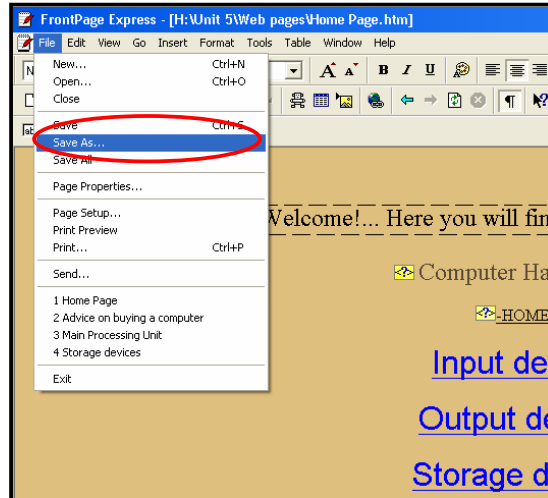


The hyper link action button is now complete; I did the same for the other four pages. Once all of the hyperlinks were made, I tested them by opening up the webpage and exploring it, it is important that these links are correct because if they were not, a user would not be able to navigate around the site properly.

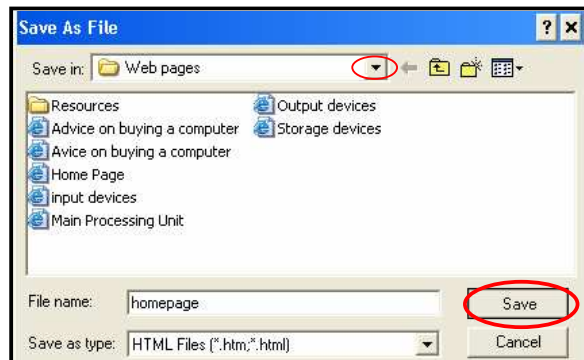
Backing up my work

To ensure that data is not lost I saved and made back ups regularly, to do this I:

(1) Click on 'File' on the main toolbar, then click on 'Save as...'

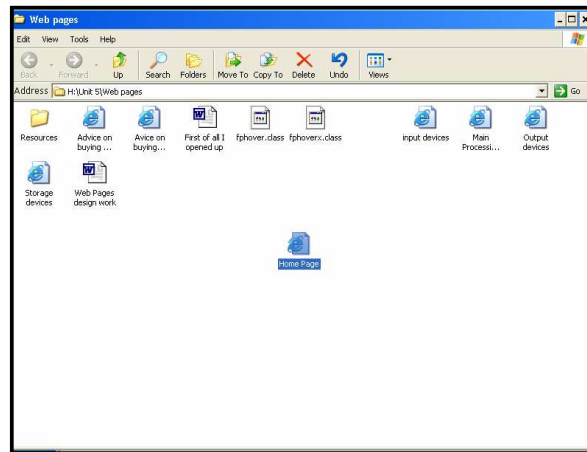


(2) When a window pops up select the file location by using the down pointing arrow and click on 'Save'.

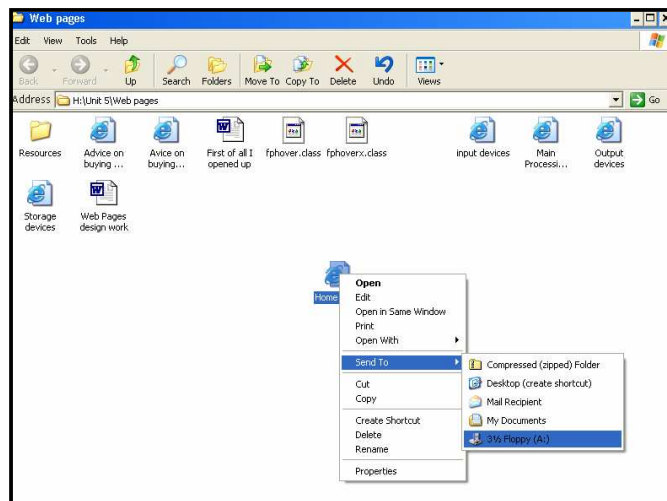


To make back ups I saved the web pages in different file locations under different names and also on a floppy disc. I also did this by sending a copy of the file to a floppy disc. This is shown on the next page.

(1) Open up the location of the file that you want to back up in ‘My Computer’



(2) Right-click on the document and click on ‘Send to’, then select the floppy disc.



The file is now backed up on a floppy disc. So if anything were to happen to the file, I can replace it with the back up.