

ICT in my Local Community

Haywards Heath is in the county of West Sussex near the border of East Sussex, in the South East Corner of England, roughly forty miles south of London and fifteen miles north of the famous coastal resort of Brighton.

Situated on the fast London - Brighton line, the town has excellent rail links to many parts of the country. It is a highly desirable location for those wishing to live away from the city yet with fast and easy access to the capital. Gatwick Airport is roughly fifteen miles north of the town, or one stop on the fast train And Heathrow can be reached around and hour by train or coach.

Dolphins Centre, this is Haywards Heath's main sports centre where there is a swimming pool, a sports hall for volleyball and basketball, cricket nets, five-a-side pitch and short tennis court, short mat bowls, badminton, squash, table tennis, snooker, sauna and steam rooms.

There is a Shopping Mall, The Orchards, which includes a (mainly food) outlet of Marks and Spencer in the main shopping street, South Road. Many of the main UK retailers including W.H. Smith and Boots have branches in Haywards Heath. Refreshingly, there are also a number of unusual independent retailers around the town.

Banking in Haywards Heath

How the Technology meets the Communities Needs

ATM's (Automatic Teller Machines) are used a lot in the Haywards Heath area. ATM's are important to the area has there are many shops and people need money to spend! Some of the banks are not open Saturday and some are but only in the morning, and when they are open there are large queues to some of them, this can annoying when you only want to get out some money. ATM's are quick, easy, reliable and there 24 Hours.

About ATM's

ATM's are "holes in the wall" where you can get money out. They can do more than that like change your pin code and get a mini statement or just check your balance and of course, to deposit money. These are normally used when there a big queues or when the bank is closed. You can use any account on any ATM, unlike in the bank, they only thing is you may be charged interest or a transaction charge.

Example of a ATM



Advantages of ATM's

- Accessible 24 Hours
- Shorter Queues
- Cheaper for banks (do not have to pay for staff work)

Disadvantages of ATM's

- They do not give a personal service
- Older people find it hard to get use to new technology
- They cannot help you if there is a problem with your account

Mobile Phones in Haywards Heath

About Mobile Phones

Mobile has revolutionized communicating everywhere, including Haywards Heath. With them means that you can keep connected anywhere. They are small and easy to use. The most popular use of them is SMS (Short Messaging Service) or mainly known as texting. This is a quick and can be cheaper than a phone call. A lot of ISP's (Internet Service Provider) now give the software to text from your PC. The more modern phones give you WAP (Wireless Application Protocol) this is internet on a mobile phone, but has not been that popular due to it been to expensive on some networks and is slow (9kbps), there are some good things with it like you can check you e-mail with it like AOL, Yahoo! etc.

The main concern with mobile phones is the radiation. Some people believe that it is harmful to the body and some people do not, but it is still been tested. The best advice most people give is do not use them for to long.

Example of a Mobile Phone



How the Technology meets the Local Communities needs.

Mobile phones are definitely popular in the Haywards Heath area, with major phone stores in the area and smaller ones as well. With business people working in London then mobile phones greatly help them, before they even get to London.

Mobile phones do not just help people commuting to London, but people in the Haywards Heath area as well. Many people work in the Haywards Heath area and mobile make their lives easier. It means that you can be anywhere in the Haywards Heath area and make phone calls.

Advantages of Mobile Phones

- Can be used anywhere*
- Easy to use and keep in contact with people
- Convenient (do not need to look for a phone box)

* need to be in an area covered by a network

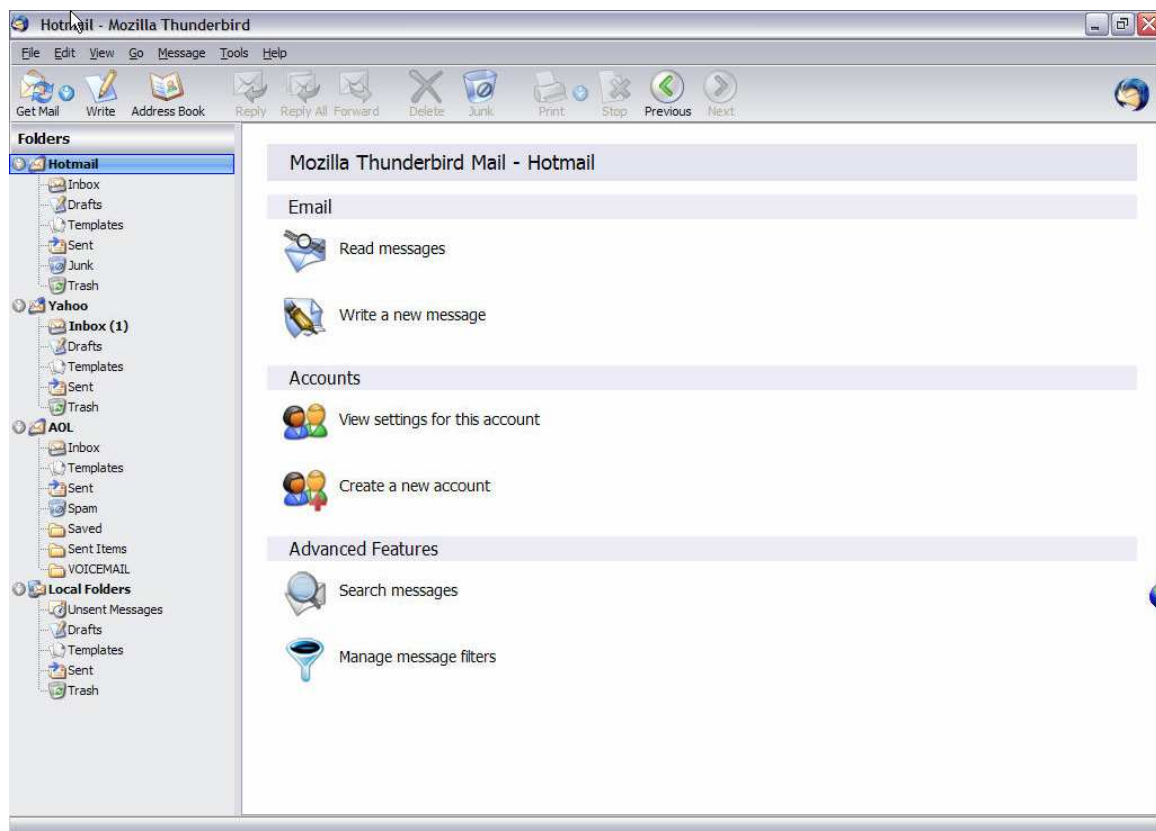
Disadvantages of Mobile Phones

- Could be health hazards
- Costly to buy and use
- Do not always work everywhere

E-Mail in Haywards Heath

About E-Mail

E-Mail is the quickest way to get letters from one place to another (it takes seconds). You can send files, letters, software anywhere in the world - as long as they have a pc connected to the internet. It is cheaper than post. It is an easy way to keep in contact, as you do not need to post letters. The only thing you cannot send is packages! This has helped people keep in contact on the other side of the world and make new friends through it.



How the Technology meets the Local Communities needs

Thanks to email you can send files from your computer to work or work to your home computer. This means that you can work from home, if needed or if needed to get a file to a work place in London urgently, it will get there in seconds.

Its is cheap or even free, so if you use to be sending out a lot of letters, that would of cost a lot over a year, but with e-mail you can send the email to many people and it is still be free.

Advantages

- Gets to its location in seconds
- Get access the files straight away, no need to send a floppy disk or CD
- Access you email any where in the World (mobile phone or web-based email)

Disadvantages

- Viruses, get into your PC through e-mail
- You have check your messages, they do not come through a letter box!
- Reliability, if your computer crashes you can not access your email