

Problem 4 Design: **Garden Centre Web Site.**

Form of Output:

A website for the Plant House Garden Centre consisting of 5 pages. Also a printout of each page.

The Plant House Garden Centre website will consist of 5 web pages.

- The first will be the 'Home Page'.
- The second will be the 'Trees and Shrubs' page.
- The third will be the 'Herbaceous Perennials' page.
- The fourth will be the 'Bedding and Rockery Plants' page.
- The fifth will be the 'Garden Supplies' page.

Why Dreamweaver?

I am going to use Dreamweaver to solve this problem by producing a Web Site because:

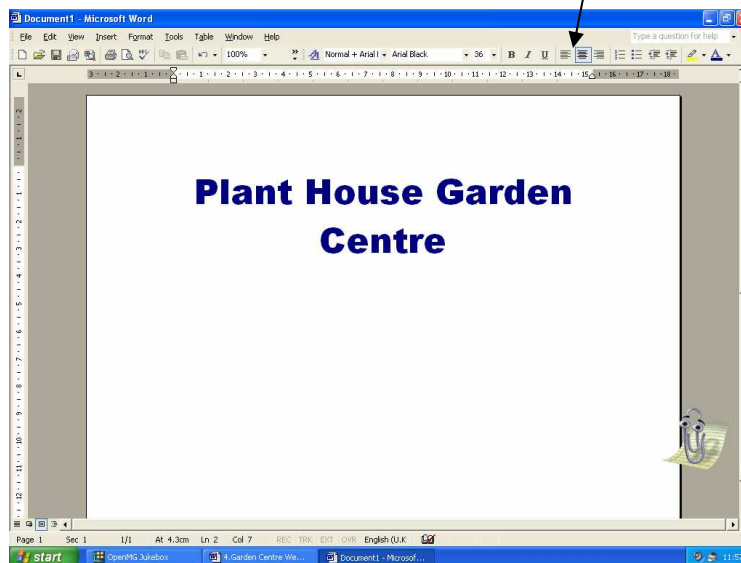
- It is a Web-designing programme and for this problem I need to produce a Web Site.
- It allows you to insert hyperlinks in forms of graphics and text, which is essential because I will be needing to insert hyperlinks from the home page to other pages on the site and also hyperlinks from all pages back to the home page.
- It allows pictures and photos to be inserted, this is very important because I will need to insert pictures of the garden centre, plants and garden equipment onto the web pages.
- It allows text to be typed onto the page, this is imperative as I will be needing to type in some text when inputting the garden centre details such as the address.
- It allows text files and picture files to be imported from disk or folders onto the page. This is important because I will need to import images from disk onto certain pages of the web site for example inserting the garden centre logo on the home page.
- It allows me to move images and text around the page allowing me to position them on the page so that it is easy for people to see everything on the page clearly so that nothing is hidden, for example the hyperlinks.
- When you press 'F12' it shows you the internet explorer view allowing you to see what the page would look like on the web and this is helpful because I will want to see what my Garden Centre website will look like on the web and it will allow me too test the hyperlinks to see if they work.
- Dreamweaver allows you to print off the web pages produced (after having pressed 'F12' and in internet explorer view), this is vital because I need to print off all of my web pages as a hard copy of my work. Also, it will help

me when doing my implementation as I will be allowed to print off earlier copies of each page.

Home Page:

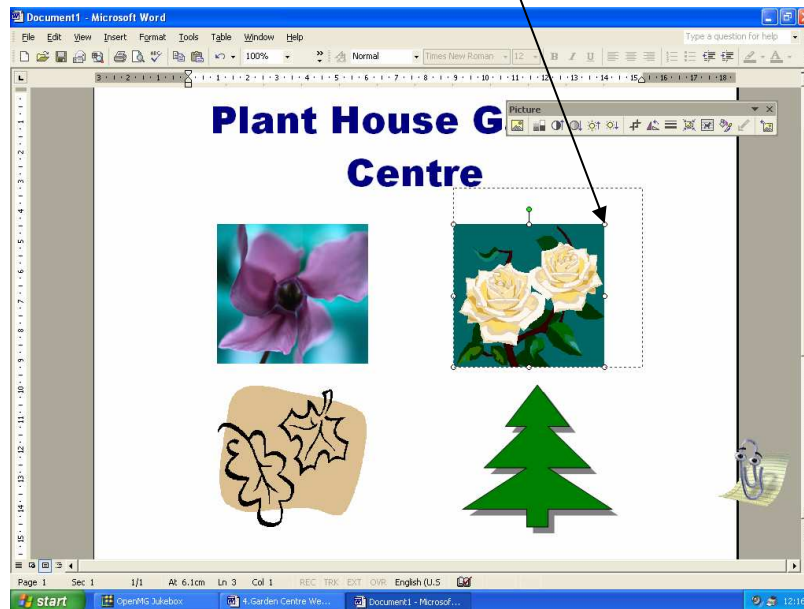
On the Home Page there will be:

- The heading 'Plant House Garden Centre' will be typed at the top of the page in a Dark Blue, size 7, 'Arial Black' font. It will be centre aligned at the top of the page. To do this I will click on this icon.

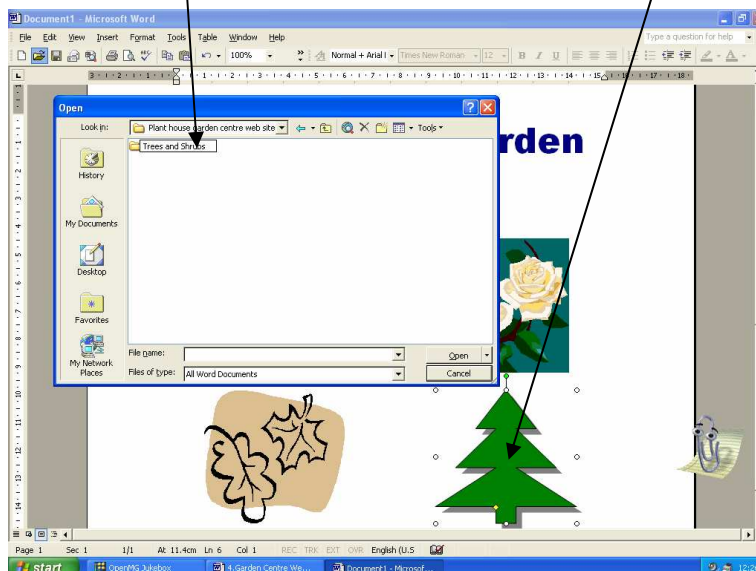


- The garden centre address (which I would have copied from the business card printed in the booklet), which will be typed in a size 4, dark blue, Arial font and positioned on the left-hand side of the page underneath the heading.
- The garden centre phone number (also copied from the booklet), that will be positioned underneath the address and it will be typed in a size 4, dark blue, Arial font.
- A garden Centre Photo (which I would have imported from a disk), which will be positioned above the address in the top left-hand corner of the page.
- The text explaining how plants are grown (which I would have imported from a disk), that will be centrally positioned below the four picture and text hyperlinks. The text will be typed in a size 4, dark blue, Arial font.
- Hyperlinks in the form of four pictures and four pieces of text. These will be positioned at the centre of the page directly underneath the heading. The picture hyperlinks will be relatively large so they are easy to see. I will

enlarge them by clicking on them, and then dragging the object box around their edges to an appropriate size.



- To create the graphic hyperlinks, I will need to click on the image I want to use as a hyperlink, then click on the 'links folder' on the taskbar at the bottom of the Dreamweaver page, and then I will browse for the page I want the link to go to. For example I will want the image of the tree to send me to the 'Trees and Shrubs' page.
- The text hyperlinks will be typed above the corresponding image.
- To create the text hyperlinks I will need to highlight the text, click on the 'links folder' and then select the page I want the text link to go to.

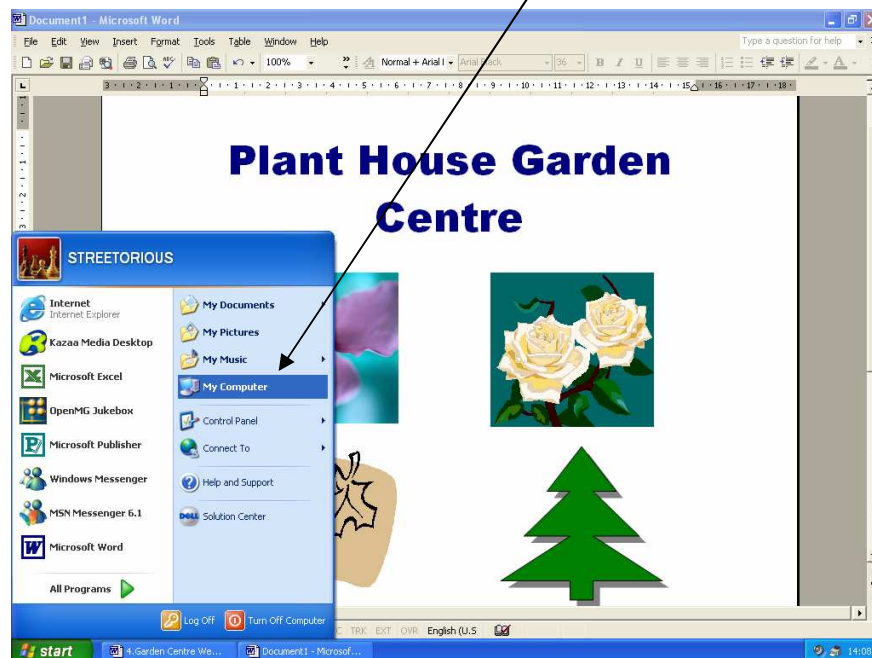


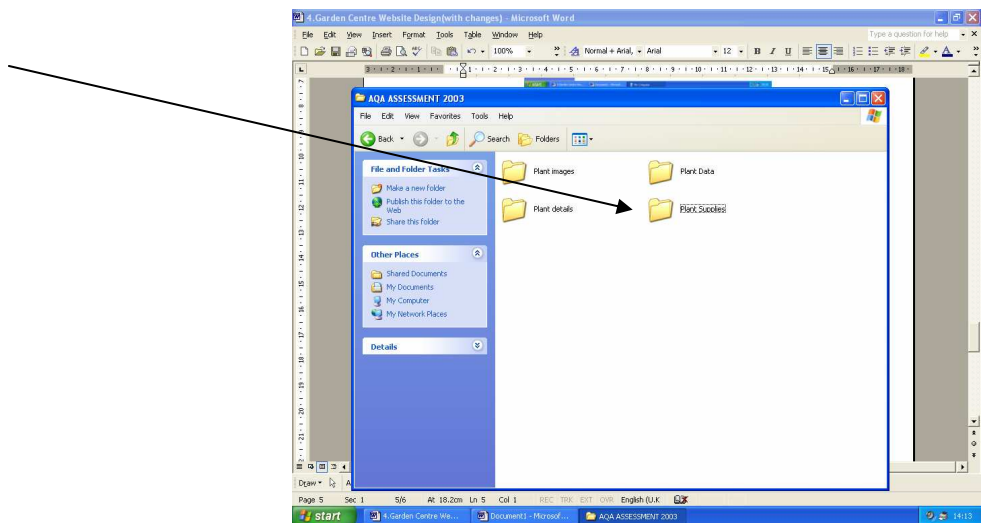
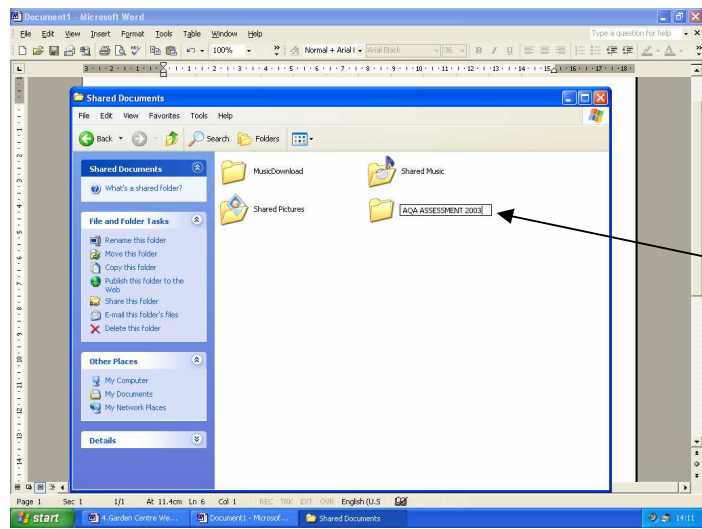
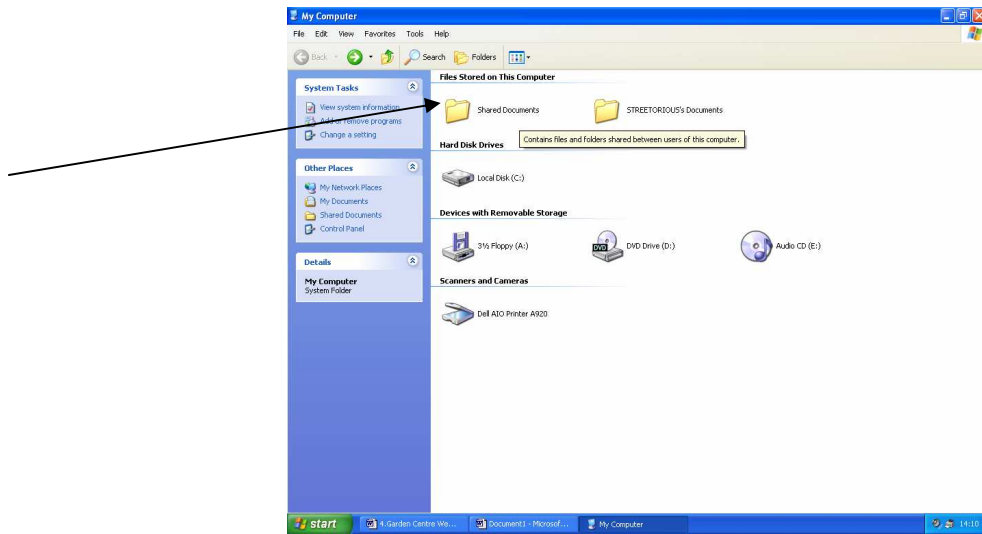
- The text hyperlinks will be 'Trees and Shrubs', 'Herbaceous Perennials', 'Bedding and Rockery Plants' and 'Garden Supplies'. They will all be typed in a size 4, dark blue, Arial font.
- These text and graphic hyperlinks will each link to the page that they state.

Plant Pages:

On the Plant Pages there will be:

- A clear heading. These will all be typed in a dark blue, size 7, Arial Black font and be positioned centrally aligned at the top of the page.
- A list of plants and their prices (which I would have imported from a disk). These will be positioned directly underneath the picture of the plant and typed in a size 4, dark blue, Arial font.
- For inserting the appropriate plant data for the selected plant pages I need to open the file called 'Plant Supplies' and it will open the document into 'Notepad'. Then, because I don't need all of the information from the document, I need to highlight only the data I need (for example, for the Trees and Shrubs page, I only need the prices and supplies of the Trees and Shrubs so then that is all I need to highlight), to copy and paste across into my Dreamweaver 'Trees and Shrubs' page.
- To import files from disk, I need to go into 'My Computer', and then click on 'Public folders', then select the folder called 'AQA Assessments' and find the file I need. In this case I need to select the 'plant Supplies' file. Then I need to open it and 'copy and paste' it onto my Dreamweaver page.





- A picture of a plant (which I would have imported from a disk), that will be positioned directly above the prices and details of the plants.
- A clip art picture of a house (that I would have imported from a disk), to be used as a hyperlink back to the homepage which I will reduced in size. This will be positioned at the top left-hand side of the page (and to the left of the heading)
- A text hyperlink - 'Back to Homepage' to be used as a hyperlink back to the home page. These will be positioned on the left-hand side of the page directly underneath the graphic hyperlink of the clip-art house. They will be typed in a dark blue, size 4, Arial font.
- To create the graphic hyperlinks, I will need to click on the image I want to use as a hyperlink, then click on the 'links folder' on the taskbar at the bottom of the Dreamweaver page, and then I will browse for the page I want the link to go to. For example I will want the image of the clip art house to send me to the 'Home Page'.
- To create the text hyperlinks I will need to highlight the text, click on the 'links folder' and then select the page I want the text link to go to (in this case the Home Page).
- The headings for the three plant pages will be, 'Trees and Shrubs', 'Herbaceous Perennials' and 'Bedding and Rockery Plants'.

Garden Supplies Page:

On the Garden Supplies page there will be:

- A heading, 'Garden Supplies'. This will be positioned at the top of the page and centrally aligned. The font will be a red, size 7, Arial Black one.
- A picture of the garden equipment (which I will have imported from disk). This will be positioned directly underneath the heading and be enlarged.
- A list of supplies and prices (which I would have imported from disk after sorting out and selecting the appropriate data in Notepad). These will be positioned directly underneath the picture and typed in a size 4, red, Arial font.
- A Picture of a house (which I would have imported from disk), to be used as a hyperlink back to the homepage. This will be positioned in the top left-hand side of the page and be made quite small.
- The text – 'Back to Home Page' to be used as a hyperlink to the home page. This will be positioned in the top left-hand side of the page, directly underneath the graphic hyperlink of the clip-art house.

Testing:

For the Garden Centre Web Site, testing is required to test that all text and graphic hyperlinks work, so when clicked on they should send you to the right page.

*Note:

All hyperlinks (both text and graphic) will be created by highlighting the selected text or image and then clicking on a 'browse' icon next to a folder called 'target' and then searching for the page you want the hyperlink to go to. The pressing 'Enter' will activate it.

All of my web site work including the pictures and images will be saved in a folder named 'Dreamweaver'.

All pages will have a different colour background. The first – light blue, the second – yellow, the third – red, the fourth – lime green and the fifth – orange.

All font colours and hyperlink colours and background colours will be changed by clicking on 'Modify' and then 'Page Properties'. Then the selected options will be changed.

All Latin Plant Names will be written in '*Italics*'. – To do this I will highlight the Latin plant names, right-click them, then select 'style' from the drop-down menu, and finally I will select 'Italic'.

All pages will have a constant style.