

Problem identification

Task 1a, b:

The pizza palace is an Italian restaurant that has been in business for two years. It made a small profit last year, but things are not looking good for this financial year. It is suffering from cash flow problems, where money coming into the business each month (receipts) is less than the money coming going out of the business each month.

The owner is particularly worried since a new Italian restaurant is about to open nearby.

The owner needs to know how much cash is coming in and going out of the business but has no experience in computer modeling and asks me to help out.

I must produce a cash-flow for next six months and suggest ways to in which cash flow can be improved.

The system that I am going to create will be used by Manager of Pizza palace's restaurant. Because the system that he is using now is hard to do and it's also time consuming.

The problem is, Pizza Palace owner doesn't know how to use this system and he has to know how to use this system because he has to solve those problems like, calculate the profit, tax, finance etc.

Tasks c:

The alternative solution to this problem would be;

- Calculate a cash flow in spread sheet and know how to update.
- Using a choice of a software package to set up a spread sheet 'computer model.
- To know how to solve formulas in Microsoft excel.

Tasks d:

The advantages and disadvantages:

- Backup files
- Formula checked automatically
- More accurate.

Task c:

The objectives of the new system are:

- To be able to avoid the plan ahead for negative cash flow.
- To be able to take advantages of positive cash flow.
- To be able to update the cash flow easily using the Microsoft excel and formulas.

Analysis

a)

Predictive sales figure:

April	£6,000
May	£7,000
June	£8,000
July	£7,000
August	£5,000
September	£6,000

Payments for the supplies;

50% of the predicted sale.

Quarterly bills;

Electricity and gas bills

- > £500 for May
- > £400 for August

Business rates;

- > £400 for June
- > £400 for September

Local Advertising;

- > £2,00 in May

b)

Data capture form:

	August	September	May	June	April	July
opening bank						
balance						
supplies						
wages bill						
loan payment						
rent						
total payment						
closing bank						
balance						

This is data capture sheet which shows the data required for six months.

Software requirements: -SoftwareApplication software

Word processing
Spread sheet
Scan disk

The application software will use in computer system in Pizza palace are Word processing, spread sheet, scan disk because these soft wares are easy to use.

System software

Windows 98
Windows 2000
ME, XP and professional

This system software will used in computer system in Pizza palace are Windows 98, 2000, ME, XP Professional because they are not complicated top use.

Utility software

Anti virus
Databases
MCAfee

The utility software will use in computer system in pizza palace are anti virus, databases and MacAfee because these software are new.

d)

Hardware requirements:Input

The input devices that they will use are mouse, keyboard and scanners. These input devices that they will use will be wireless and digital because if they want to use the mouse or keyboard for typing they can type easily.

1) Keyboard

The most common input device will use is the standard computer keyboard. When a key is processed a signal id sent from the keyboard to the computer processor.

Keyboards are used in pizza palace offices so that their staff could enter in data.



2) Mouse

Another common input device is the mouse. Mouses are very easy to use they usually have 2 or 3 buttons. Under the mouse there is a ball, which rotates when the mouse is moved across a flat screen. Mouse is used in pizza palace offices so that their staff could open up software's, databases and spreadsheets.



3) Scanner

Pizza palace uses their scanner to scan in pictures taken with a normal camera or digital camera so they can be used in catalogues. They also use this device so that reports can be scanned in order to speed up work rather than typing it up.



Output devices

The output devices that they will use are printer, monitor and speakers. They are going to use printer to print their files such as posters and banners. Monitor will help to look at what they are doing and speakers will help to hear voice mail etc.

1) Printer

Pizza palace will use printers in there offices to print out information about their customers and to print their monthly magazines. Printers make a permanent copy of the work on the screen. It copies exactly what you have on your screen to paper.



2) Monitor

Monitor is computers screen; another name for monitor is visual display unit (VDU). Pizza palace has monitors in their offices it is another output device which is often more often because it is used while the operator is using the computer. Monitors are like TV screens. It shows the data input from you keyboard, scanner and digital camera and shows you what way you are pointing your mouse.



3) Speakers

Some of Pizza palace computers are fitted with small internal speakers that will make a noise for example if you hit the wrong key. You can even listen to music whilst you work on the computer by plugging in a headphone so you don't disturb anyone from working. They look like hi-fi speakers. There can also be used to test the music there have on their website.



Storage devices

The storage devices that they will use are CD and Floppy disk. The CD will allow them to install anything they want and the floppy disk will allow them take files out of the computer.

1) CD Rom

Some computers in Pizza palace have a CD Rom (compact disk, read only memory) because it is only needed to open up a disk, which has information which can't stored in a floppy disk.



2) Floppy Disk drive

Every computer in Pizza palace has a floppy disk drive because it enables you to save files onto a floppy disk so that you can take data files between home and All-Star promotion and make back up files as security measure.



Processor

The processor that they are going to use is CPU (Central processing unit). This processor will solve every command that given to it.

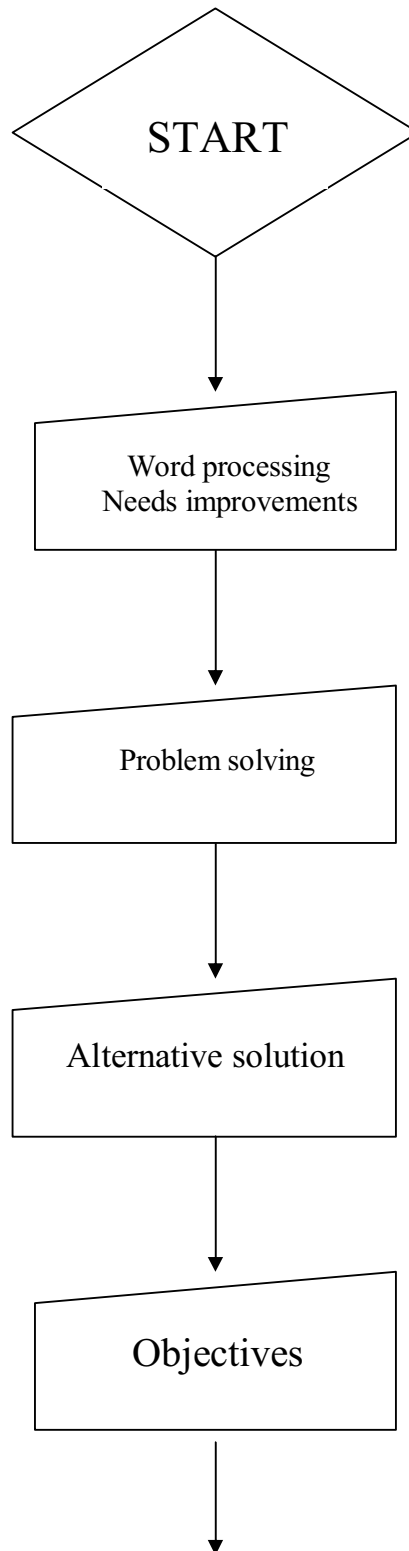
1) CPU

The CPU (central processing unit) is silicon chip another name for it is processor. Pizza palace has CPU in every computer system because without it the computer can't work it is the brain of the computer system. All the hardware attached to the computer system are controlled by the CPU are called peripheral device or simply peripheral. How ever fast your processor work's that's how fats your computer works. Intel Pentium, AMD, Athol XP and Intel Celeron processor are companies that make and design the CPU.



There are 3 main parts to the CPU, which are the control unit (CU) the Arithmetic, and Logical unit (ALU) and the Immediate Store (LAS)
An all-Star promotion uses 1.8 GHz Intel Pentium 4 processor.

System flow chart:



Design

a)

Test plan

To check my formulas I need to use Microsoft Excel and inserted a smaller number of casual figures.

5

4

5

289

43

12

Formula works

By clicking the auto sum key and then switching it to the formula mode shows me the formula used to work out extra work.

5

4

5

289

43

12

358

By using this formula =Sum (A1:A2)

My test was successful seeing that the calculations were exact as given underneath:

5

4

5

289

43

12

358

This is a copy of a PIZZA PALACE vat cash flow howing the entire bank

	Pizza Palace					
	April	May	June	July	August	September
Opening Bank Balance(A)	<u>-£2,000</u>	<u>£2,050</u>	<u>£4,100</u>	<u>£3,550</u>	<u>-£3,100</u>	<u>-£4,050</u>
Total receipt	<u>£6,000</u>	<u>£7,000</u>	<u>£8,000</u>	<u>£7,000</u>	<u>£5,000</u>	<u>£6,000</u>
Expenses:						
Vat	£1,050	£1,225	£1,400	£1,225	£875	£1,050
supplies	£3,000	£3,500	£4,000	£3,500	£2,500	£3,000
Rent	£250	£250	£250	£250	£250	£250
Business Rates			£400			£400
Wages bill	£2,500	£2,500	£2,500	£2,500	£2,500	£2,500
loan payment	£300	£300	£300	£300	£300	£300
Advertisement		£2,000			£400	
Electricity and gas		£500				
Total Expenditure (C)	<u>£6,050</u>	<u>£9,050</u>	<u>£7,450</u>	<u>£6,550</u>	<u>£5,950</u>	<u>£6,450</u>
Net Cash Flow B-C (D)	<u>-£50</u>	<u>£2,050</u>	<u>£550</u>	<u>£450</u>	<u>-£950</u>	<u>-£450</u>
Closing Bank Bal A+D	<u>-£2,050</u>	<u>£4,100</u>	<u>£3,550</u>	<u>£3,100</u>	<u>-£4,050</u>	<u>-£4,500</u>
Balance check	CRISIS	CRISIS	CRISIS	CRISIS	CRISIS	CRISIS
	17.5					

f)

The appropriate backup measures that will be applied:

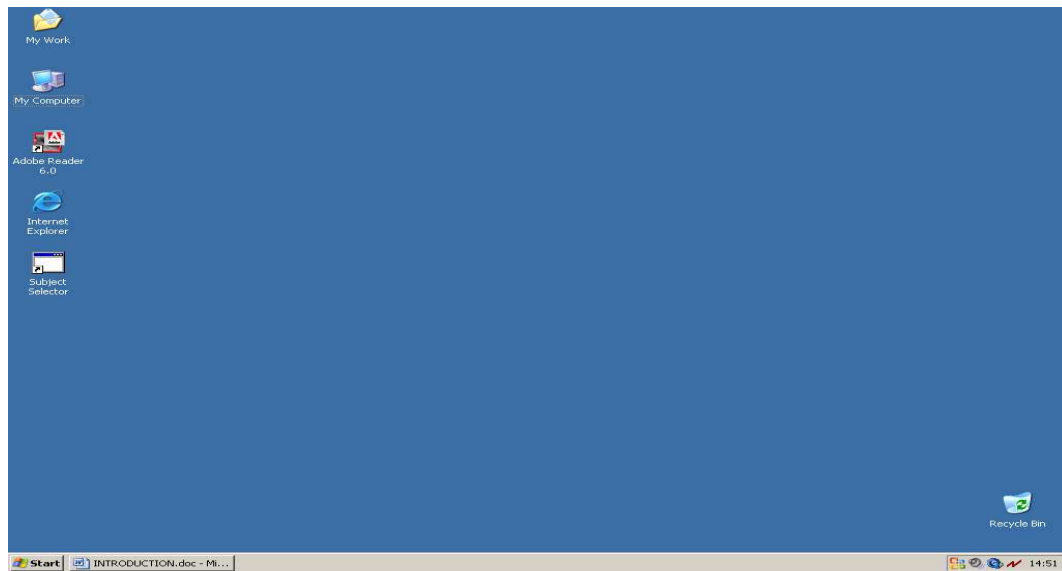
- Floppy disk
- CD- RW disk
- CD - Rom

g)

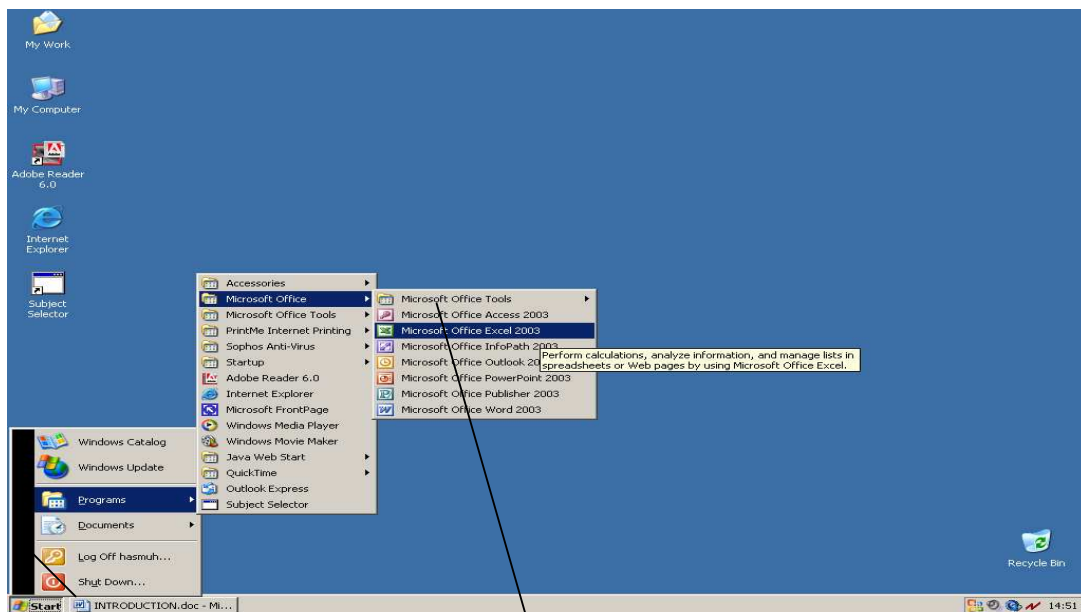
The appropriate back up security measures that will be applied:

- Scan disk
- MacAfee
- Norton virus
- Fire well security
- Password Protection
- CCTV Cameras

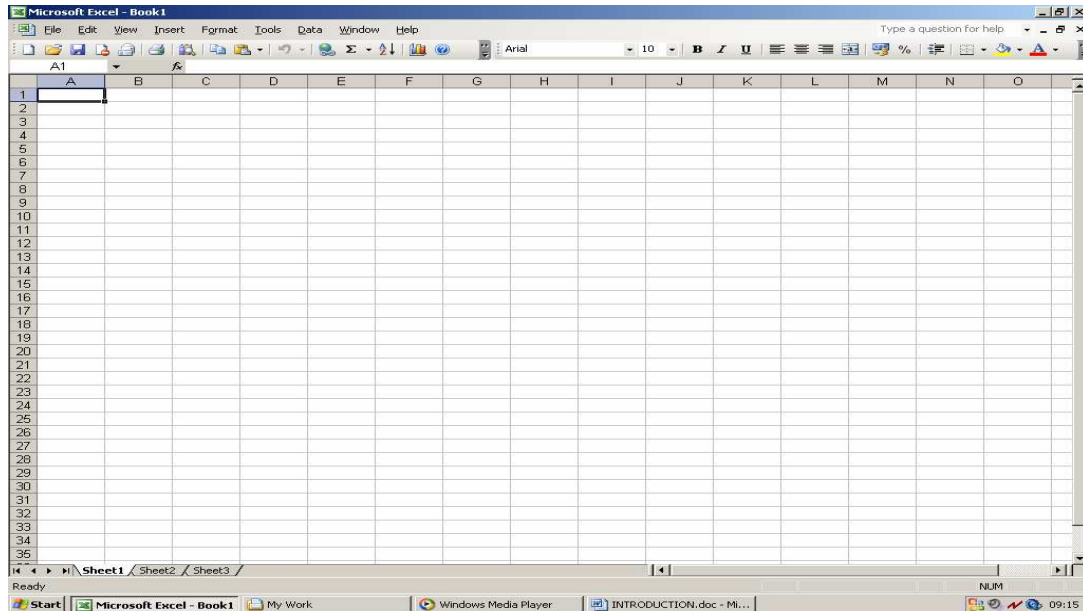


USER GUID: -

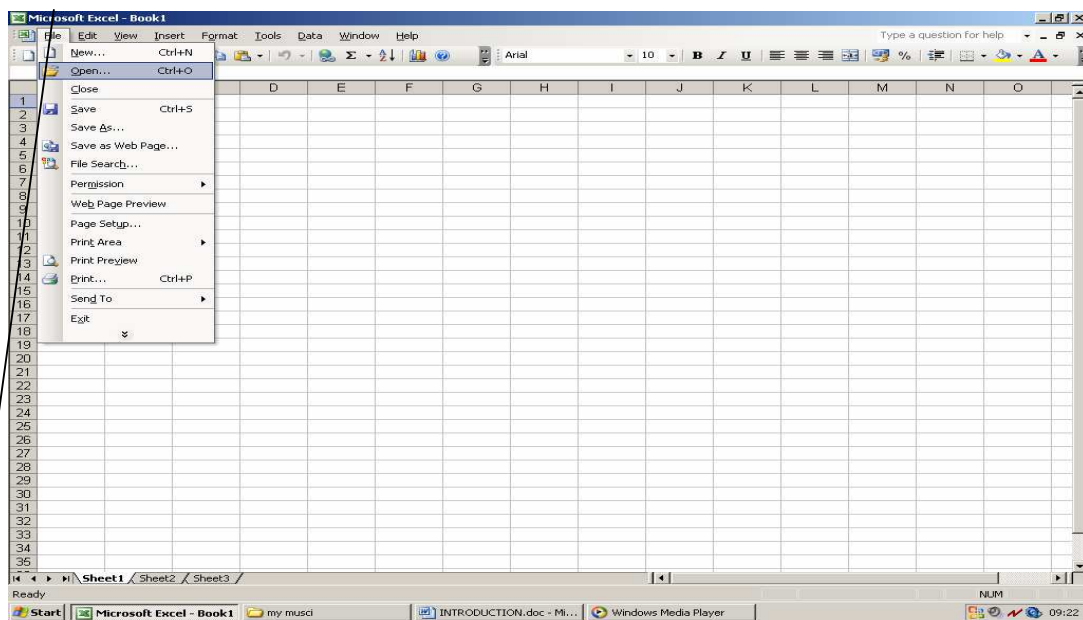
First you need to log on the computer and wait for few seconds until the main desktop appears.



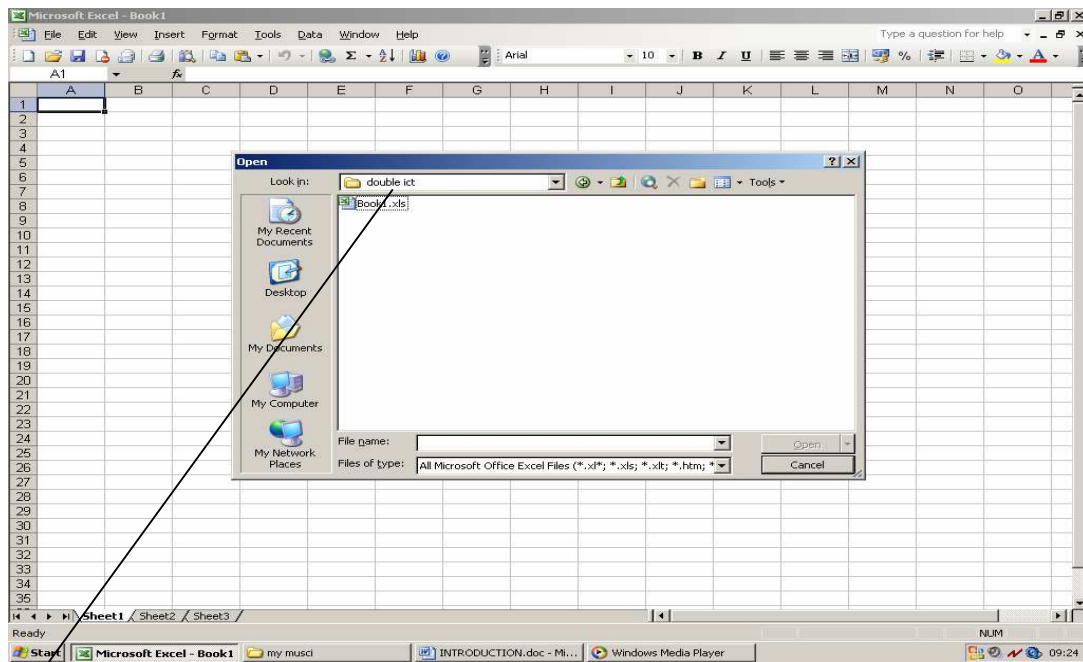
Then you need to click o start button on your desktop page and Microsoft office and then Microsoft excel.



Then this page would appear.



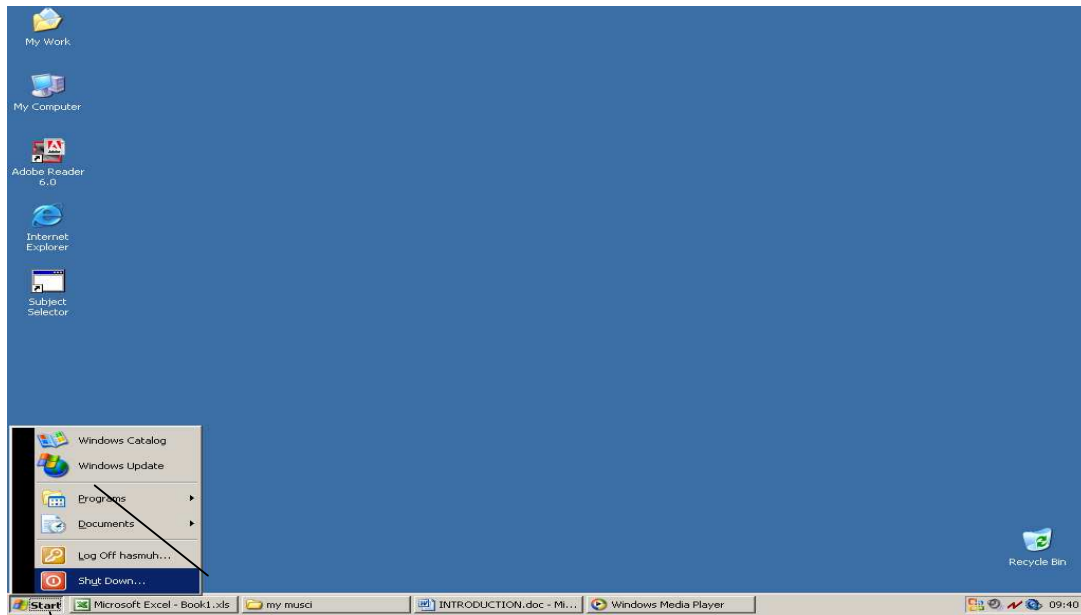
Then you need to click on the left side button file and then open.



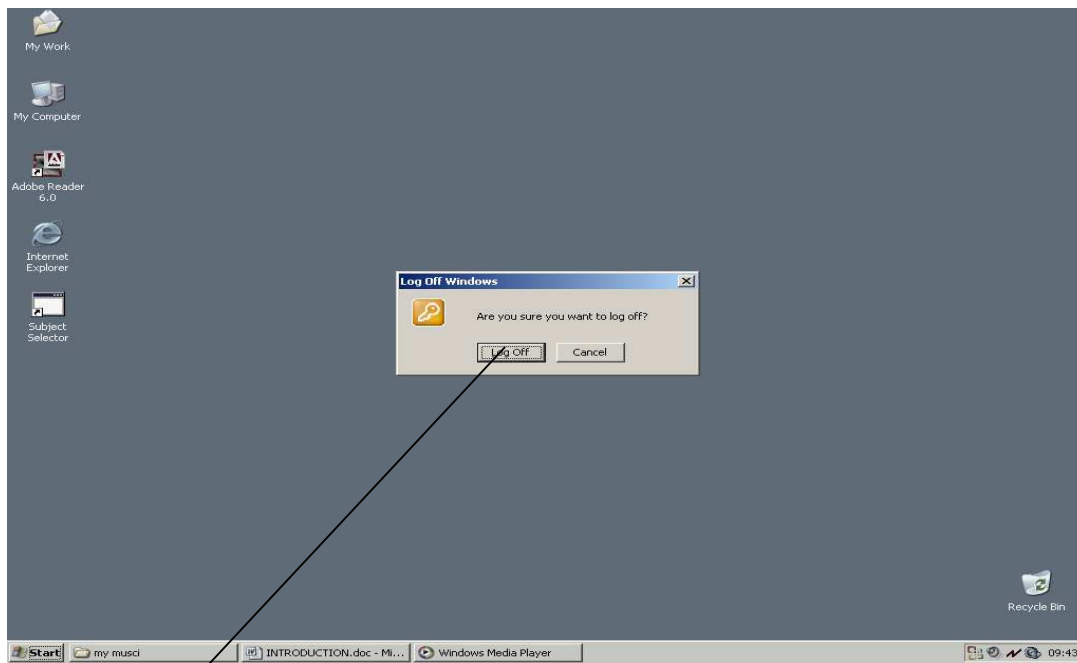
After you click the open button then this open box will appear on you screen. And you need to click on the book 1.

	April	May	June	July	August	September
Opening balance	-1000	-1050	-3100	-2550	-2100	-3050
total receipts	6000	7000	8000	7000	5000	6000
Supplies	3000	3500	4000	3500	2500	3000
wages	2500	2500	2500	2500	2500	2500
Loan Payment	300	300	300	300	300	300
Rent	250	250	250	250	250	250
Electricity and gas	0	500	0	0	400	0
Business	0	0	400	0	0	400
Advertisement	0	2000	0	0	0	0
Total repayment	6050	9050	7450	6550	5950	6450
net cash flow	-60	-2050	550	450	-950	-450
Closing bank balance	-1050	-3100	-2550	-2100	-3050	-3500

Then your cash flow system will appear and then you can make changes on it or you can improve it.



After you done everything and saved then you need to logoff. And for logging off you need to again click on the left bottom start button. And then log off.



And then click Log off.

