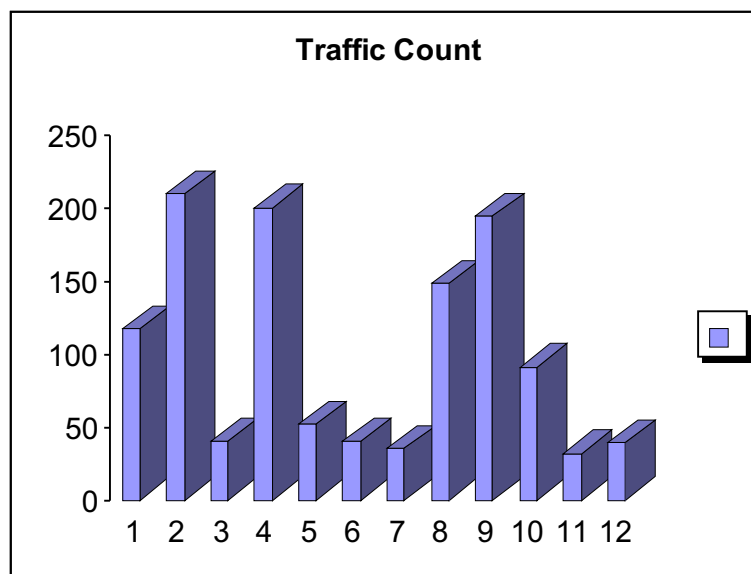
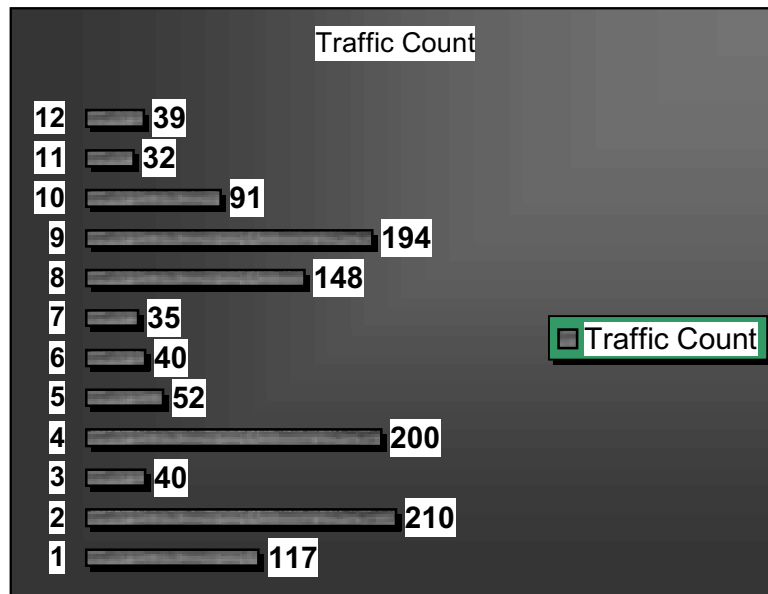
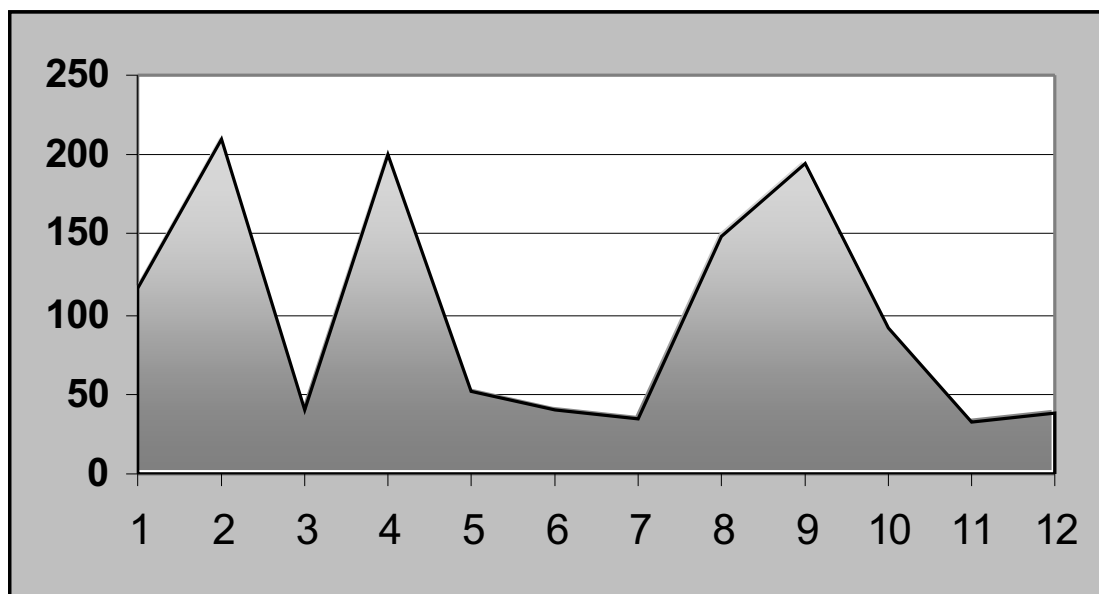


Traffic Count Tables







Hypothesis 5

I needed to collect one piece of data.
Is the environment better in the outskirts?

Data Collection

I walked around Henley to see what the environment was like I expected to find a better environment in the outskirts and worse environment in the CBD. I used 6 indicators to justify the aim. The indicators Were Litter/Pollution/Noise/Greenery/House Condition/Vandalism. I expected the environment to be better in the outskirts than in the CBD because there is less people and traffic.

Problems

I could not see what the back gardens were like they might be clean they might be filthy.

Quality Indicator Table

<u>Quality Indicator</u>	<u>Site Numbers</u>											
	<u>1</u>	<u>2</u>	<u>3</u>	<u>4</u>	<u>5</u>	<u>6</u>	<u>7</u>	<u>8</u>	<u>9</u>	<u>10</u>	<u>11</u>	<u>12</u>
Litter	4	10	1	4	5	10	6	9	3	5	6	4
Pollution	10	7	10	7	8	10	9	10	2	10	7	0
Noise	3	8	2	7	8	8	9	3	2	2	4	1
Greenery	7	5	7	3	4	7	5	7	0	6	9	5
House condition	2	5	4	4	5	8	6	9	5	1	3	0
Vandalism	9	10	1	2	3	3	4	10	5	8	0	7
Totals	21	28	14	16	20	26	24	29	12	17	16	13

0-terrible
10-fantastic

Hypothesis 6

I needed to collect one piece of data.
The parking restrictions will be worse in the CBD?

Data Collection

I walked around Henley to find out what the parking restrictions were like I expected to find more restrictions in the CBD and less in the outskirts, because there is more traffic in the CBD and it needs to be uncongested. I looked for single and double yellow lines.

Problems

Men were doing road works in the market place and I do not know what the restrictions are going to be.



A

n

a

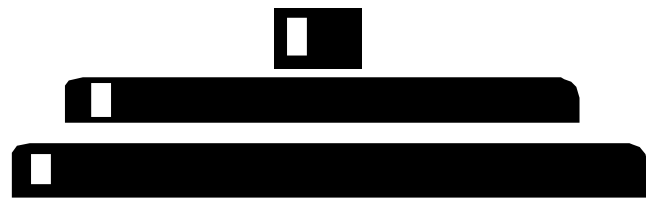
i

y

s

i

s





Hypothesis

1

Analysis

The Land in the CBD will be mostly shops and offices?

The map shows what the buildings are used for. In the north of Henley along Bell Street the buildings are mostly used for shops and offices. Along market place and Duke Street the shops get less and less and residential areas start. Further south along Reading Road industrial shops and less important shops start.

In the CBD there are more shops and offices because the CBD is the most assessable area and most people go to the CBD.

This proves that there are more people and traffic in the CBD.



Hypothesis

2

Analysis

The Building height will be higher in the CBD then the outskirts?

The map shows how high the buildings are used for.

To the south of Hart Street and west along Duke Street the buildings are all two stories.

Along the south of Bell Street and down Market Place most of the buildings are three stories.

In the CBD is cheaper to build up instead of across.

This shows there are taller buildings in the CBD.

Hypothesis

3

Analysis

Are there more pedestrians in the CBD?

The graphs show how many pedestrians there are in Henley.

There were more pedestrians in the CBD. Along Market place and Bell Street there were the most pedestrians and along Duke Street there were the lest pedestrians.

There are more pedestrians in the CBD because the CBD is the most excisable area in Henley.

It proves that there are more pedestrians in the CBD.



Hypothesis

4

Analysis

Is there more traffic in the CBD?

The graphs show is there more traffic in the CBD.

There was more traffic in the CBD and along Duke Street were as you go further out along the outskirts there was less and less traffic.

It proves there are more cars and traffic in the CBD.



Hypothesis

5

Analysis

Is the environment better in the Outskirts?

The graph shows what the environment is like in the CBD and outskirts. The environment is quite good in the outskirts but it gets worse along Bell Street and Duke Street.

The CBD is the most excisable area of Henley and the most traffic and people are there for there will be more pollution in the CBD.

It proves that there is more pollution in the CBD.



Hypothesis

6

Analysis

The Parking restrictions will be worse in the CBD?

The Map shows what the parking restrictions are like in the CBD.

Most of Henley is single yellow lines but along Bell Street and part of Duke Street and Market Place double yellow lines start.

The CBD is the place where most people want to go and if there were no restrictions every body would park anywhere.

It proves that the parking restrictions are worse in the CBD.