



## **Analysing Salvador Dali's Galatea of spheres, 1952**

The artists name is Salvador Dali; the portrait I am intending to analyse is Galatea Of Spheres. Dali has painted many surrealist portraits.

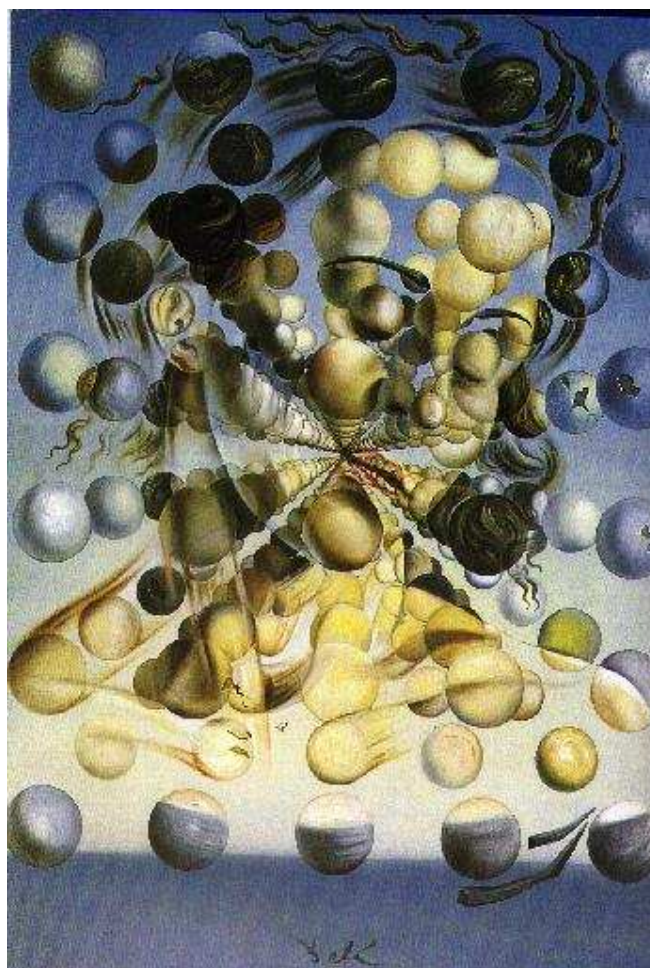
When I look at the portrait of 'Galatea Of Spheres', I can see that Dali has used a variety of pale colours and he uses circular shapes, which I think represent spheres and inside the spheres he has drawn the features of a persons face. To me this is a fine use of texture because I think it builds character in a painting. I've noticed that throughout his work the positioning of the objects seem to be located in the centre of the portrait. In the portrait, which I have selected and analysing I've noticed that he has drawn the lady as if she was indignant inside and behind her looks as if the sun is set. If I was asked what I thought was the most important part of the work, I would have to say that Dali has mainly focused on the face and the spheres in which he has drawn the features. I'm not positive about the exact time of year, but I can tell you it looks as if it has a clear sky, so I would have to say it could be summer and the time of the day is early evening, the evidence is that the sun is setting. Salvador Dali was obsessed with spiritual - mystical portrait of Galetea and science the spheres in which he has drawn are combined as a general order of the universe, so he painted it over and over. The background is simplified basically the same, with only the sky and the sea. Making up any subject, which would only complicate the principal theme. I can tell by just looking at this portrait that it has been distorted, I can tell this because you're able to see half of the face through the spheres, I would also call is surrealism because you wouldn't normally see an oversized head in front of a sunset background. Salvador Dali uses a variety of pallid and dark colours throughout his work and on the top of this uses dark outlines to give the portrait a 3-D effect. The portrait has been distorted due to the fragmentation of the spheres, which are located in a middle of a sunset background. My opinion on his detail in this portrait, I would have to say is basic; there is not a great amount of detail when it comes to the face and the background looks simple. I think that Dali has used texture because the spheres create texture as he makes them stand out and texture builds character. Dali has created an discontented atmosphere, I think that he has created using dark and pale colours and makes Galia look extremely sorrowful. I have taken a liking to the portrait because it is unusual and I have never seen anything like it before. Picasso's work consists of a variety of dark colours and dark outlines, whereas Dali uses a variety of pale colours and surrealism. But Picasso's work is known to be distorted as he mainly focuses on Distorted faces. Dali doesn't just focus mainly on faces, he goes as far as drawing surrealist bodies of woman and focuses on their upper- body, but when I come to create my piece of work, I am only going to focus on the face, as to me it is the most important part of a woman as it is always on show to the world.

I haven't yet tried any of Dali's methods but I will, when I draft out my final piece of work. Dali's work influenced me because it was



unusual. The fact is that Dali is not afraid to use a variety of materials and hopefully I will be able to show that in my own work.

I will not be using the spheres in my final piece of work, as I found it time consuming and difficult to produce.



Galatea of the Spheres